



# New Buckenham Parish News

 **New Buckenham Arts  
Film Night**

Promoted by  
New Buckenham Arts  
**NEW BUCKENHAM  
VILLAGE HALL**

ACADEMY AWARD WINNER  
**RENÉE ZELLWEGER**

**JUDY**



**NEW BUCKENHAM VILLAGE HALL**  
***Saturday 29 February at 7.30pm***  
**Tickets £5 at Kings Stores (£6 on the door)**  
**Bar from 7.00 pm                      Teas & ices**

**February 2020**

TEL - 01953 860008

EMAIL - STACEY@ANGELCAKESTEAROOM.CO.UK

## ANGEL CAKES TEAROOM

NEW BUCKENHAM  
NR16 2AF

FACEBOOK:  
WWW.FACEBOOK.COM/ANGELCAKESBYSTACEY/



We are a family run Tearooms/Cafe specializing in great homemade cooked food, refreshments, home comforts, customer service & most importantly CAKE!!!

Pop in for a cup of coffee & cake or a spot of lunch in a relaxed environment. Stay as long as you like & chat with friends and consider us your home away from home.

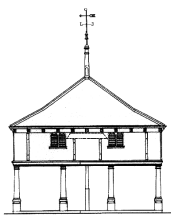
Table service is provided so no need to wait around, just take a seat, you may lounge on the ground floor by the fireplace or sit upstairs by the large windows overlooking the beautiful village of New Buckenham.

### SERVICES

- Bespoke Celebration Cakes (Birthdays, Weddings, Christenings etc)
- Afternoon Tea (Booking only)
- Private functions (Birthdays, Christenings, Funerals, Meetings etc) (Capacity 25 upstairs, 12 downstairs)
- Outside Catering (Functions, Corporate, Afternoon Tea etc)
- Wedding Afternoon Tea Catering (All China Supplied)
- Cake Decorating Classes.

For all inquiries please speak to a member of our staff in store or by telephone or you can drop us a message through our Facebook page.





# New Buckenham Parish News

February 2020

## Film Night: *Judy*

Our next film, *Judy*, will be on Saturday 29th February. Renee Zellweger gives an award-winning performance as Judy Garland in a biographical drama about the American singer and actress. Much of the film is set in 1968, when Judy is performing at London's *Talk of the Town*. It is 30 years since she shot to stardom in *The Wizard of Oz*. Now, under considerable financial and emotional pressure, she struggles to perform.

Tickets cost £5 (£6 on the door). They are on sale at Kings Stores or can be reserved by calling 01953 861114. Doors at the Village Hall will open at 7pm for bar and refreshments, and ice creams will be sold during the interval. The programme will start at 7:30pm. A warm welcome is guaranteed!

*Sandra Lester*

*New Buckenham Arts*

## Thank You

This month's issue is kindly sponsored by New Buckenham Players. We are grateful to all our sponsors who help with the magazine's production costs.

If you would be interested in sponsoring a future issue of *Parish News*, please contact Mary Dowson (01953 860320 or [mdowson@btinternet.com](mailto:mdowson@btinternet.com)).

*Parish News Committee*

# We need your comments on the Plan

The Neighbourhood Plan was published on 21st December. Every household had a copy delivered and we hope you have had a chance to read it. The Plan is not perfect, so we do need your help to improve its content and refine its policies before it goes off to Breckland for further consideration. We hope you find the Plan attractive and interesting to read, but it's the evidence and the policies in it that are important. Have we missed anything out? Do the policies reflect our findings, especially what we've learned from the big survey of residents known as SURVEY17?

We had a huge response from everyone in the village when we did SURVEY17, far higher than similar surveys elsewhere. As so many youngsters completed SURVEY17 we look forward to their comments as well, so please encourage them. All comments, whether critical or supportive, will be most welcome.

The best way to send your comments is to go to our website [www.np4nb.online](http://www.np4nb.online), download and complete the form, then email it back. If you want to send handwritten comments, please leave them in the special envelope at Kings Stores. We need to receive your comments in by Friday 14th February.

*Charles Oxley*

*Neighbourhood Plan team for New Buckenham Parish Council*

## Tommy Winser

We are very sad to note the passing of Tommy Winser, who died on Boxing Day at the age of 87. He was involved with and supported numerous village organisations and events, and played with the New Buckenham Silver Band for 78 years. We extend our sympathy to Rosemary and his family and friends.

*Parish News Committee*

***When you need some help  
around the house....***



***...call the Cavalry***

- **Domestic cleaning**
- **Ironing / laundry – collection and delivery service**
- **Dog walking / feeding – daily home pet service whilst you are on holiday or at work**
- **Errands – any form of shopping, collection or delivery**

**Whatever your task,  
we will endeavour to tackle it  
to your satisfaction**

There are occasions when everyone could do with a little help around the house – in times of illness, disability or simply from pressure of a busy lifestyle.

Whether you need assistance on a regular basis or just occasional help, Household Cavalry is here to provide a dependable, diligent and trustworthy service.

Our carefully selected, fully vetted and insured team can tackle a whole range of household tasks.

Our fee structure is flexible to accommodate your needs, so if you would like more information about our services or a quotation, **please contact Sally on:**

**01953 488635**

**07900 894902**

**Household Cavalry Limited**

**Slate Plantation Barn, Home Farm Lane,  
Merton, Thetford, Norfolk IP25 6QS  
sgt.major@householdcavalryltd.co.uk**

***Buckenham House  
Holistic & Beauty Therapies***

Facials  
Reflexology  
Indian Head  
Massage ~ Swedish, Hot Stone, Lava Shell  
Pregnancy Massage  
Hopi Ear Candling  
Manicure & Pedicure  
Eyelash & Brow Tinting  
Waxing

Using Eve Taylor, OPI, OPI Pro Spa, OPI Gelcolour, Orly,  
Orly GelFX, Songbird and GiGi Wax Products

Beauty & Holistic Therapist NVQ3 and fully insured.  
Member of the Association of Reflexologists

To book an appointment or for enquiries  
Contact Jane on  
**01953 860013**

OR

Find me on  
**facebook**

New Buckenham Rd, Old Buckenham, NR17 1PW

**WOMACK**  
**BUILDING SUPPLIES LTD**



**01953 788077**

**07770 388314**

**07796 638877**

**info@womackbuildingsupplies.co.uk**

**Architectural Salvage**

# BEAUTY BOX

## AND FOOT HEALTH PRACTICE

Dermologica facials / Body treatments

Aromatherapy and Swedish massage

Indian Head massage

Manicures / Pedicures

Nail extensions

Waxing Electrolysis

General foot care / nail cutting

Corns / Hard Skin

Ingrowing toe nails

Verruca treatment / Diabetic Feet

HOME VISITS AVAILABLE

**Gayle Wilby Dip CFHP / MPSPract**

A MEMBER OF THE ALLIANCE OF PRIVATE SECTOR  
PRACTITIONERS

1 Norwich Road, New Buckenham

Tel: 01953 861 021

## Just Ask

## Property Maintenance

for all your property requirements  
specialising in Kitchens and Bathrooms

**Free No Obligation Quotes**

## Just Ask Paul

**on**

**01953 861476 or 07584 283624**

email: justaskpaul1@yahoo.co.uk



HAND-MADE WINDOWS  
DOORS, KITCHENS  
AND FURNITURE

# JB CARPENTRY



EVERYONE IS TALKING ABOUT  
JAMIE'S HAND MADE WOODWORK  
TELEPHONE JAMIE ON  
**01953 860 933**

# Broadland

## TREE SERVICES

- Tree Surgery
- Consultancy
- Landscaping
- Stump Grinding
- Wood chippings for sale
- Access Hire

J K Anderson  
NDF F. ARBOR. A

P J Anderson  
ND. ARB

The Limes, Rothbury Rd, Wymondham

**t: 01953 607715**

Sycamore House, Tanning Lane, New Buckenham

**t: 01953 860370**

**www.broadlandtreeservices.co.uk**

# New Buckenham Art Exhibition

Entries for the art exhibition have now been sent to artists who have exhibited previously. As the entries do not close until Friday 6th March, there is still plenty of time for new exhibitors to enter. If you know of an artist who you think would like to exhibit their work please ask them to get in touch.

As usual, it is all about planning and so we need your help to make everything run smoothly. I know many of you help each year in some way and we are extremely grateful to everyone who gives their time to support this event. If you have not been involved and would like to help in some way please do get in touch.

There are several ways you can contribute: stewarding at the exhibition, baking a cake for the refreshments, helping hang the pictures, helping dismantle the exhibition, or donating a prize for our raffle, to name but a few. It is a fun event and everyone is part of a big team.

I will give more details about all these in next month's *Parish News*. Please make a note of the exhibition dates over the Easter Weekend: our opening night is Friday 10th April. All proceeds are donated to St Martin's church and our Village Hall.

*Hazel Rush*

*hazelrush@btconnect.com / 01953 861014*

## Carols Around the Tree

I would like to thank everyone who came to the carols this year. Despite the miserable weather, the new Christmas tree lights added cheer and the village sang the carols with great vigour, the children played percussion instruments and we raised just over £163 for The Children's Society.

Special thanks to Clive for help with publicity, John for lighting, everyone who donated gifts for the refreshments, all the helpers warming and serving hot drinks and food, Susie for a great job as our annual Musical Director and Billy for his brilliant accompaniment on the keyboard!

Until next year.....

*Claire*

## Hair of the Dog 2020

It was lovely to see so many walkers for Hair of the Dog on New Year's morning. I counted 56 of the two-legged variety at the Market Cross. There were several newcomers there and I hope they felt welcome and enjoyed their day.

Many thanks to the many kind people who helped at the village hall lunch after the walk. We think this was the 24th consecutive walk, so next year will mark something of an anniversary!

*Charles Oxley*

*New Buckenham Society*



# St Mary's Residential Care Home

Market Place, New Buckenham, Norfolk, NR16 2AN

**tel: 01953 860 956 email: [manager@stmaryshome.co.uk](mailto:manager@stmaryshome.co.uk)**

A home from home, at St Mary's, we offer 24-hour person-centered care within safe, warm and friendly surroundings with an emphasis on providing a high quality of life.

- Care services offered include day care, respite, dementia, palliative, end of life and long/short-term residential care
- Day care services include hot meals & refreshments
- Freshly prepared meals, including catering for special diets - Consistently received highest Food Hygiene rating of 5 star
- Single occupancy rooms, passenger lift, two enclosed gardens, Wi-Fi, nurse call facilities, wheelchair friendly wet room and a hair salon
- Residents enjoy engaging and stimulating activities
- Top ratings by residents, family & friends and healthcare professionals
- Social Services and self-funding residents welcome
- Self-funding residents offered very competitive rates
- Care package tailor-made to meet your requirements
- No-obligation free trial day offered

**For further information or for a fact-finding visit, please contact  
the manager on 01953 860 956 or email  
[manager@stmaryshome.co.uk](mailto:manager@stmaryshome.co.uk)**

Registered and licensed to provide services by the Care Quality Commission (CQC)

**- Under new management -**

## Winter Warmer Drop-in Cafe

Both of the previous sessions of the drop-in cafe were quite well attended, a lot of tea was drunk, biscuits eaten and laughter had!

The next two, on Monday 3rd February and Monday 2nd March (and the last for the Winter) will be from 3:30pm to 5:30pm in the Large Meeting Room at the Village Hall. If you haven't been before, it's a very relaxed affair; just turn up at any time, have a cuppa and a chat, board/card games are available. Catch up with friends or make some new ones. Bring your knitting/other crafts or a CD you think others might enjoy. It really is up to you. Unlimited tea, coffee, squash and biscuits will be available for a nominal charge of £1.

Hope to see you there, whether you have been before or are a newbie. Any queries, please contact me!

*Kathie Steel*

*01953 860521 / kigeary57@btinternet.com*

## Snowdrops

We are not sure whether the snowdrops were affected by the very dry summer, as they are just starting to come out now. Anyway, the castle is looking very good, so we shall leave the gates open from 1pm until dusk on Sunday 16th February for anyone who would like to see how they are getting on.

*Christopher and Helen Pearson*



Outstanding advice  
and legal expertise for  
the region

### How can we help?

- Agriculture
- Conveyancing
- Employment
- Family
- Wills, Tax & Probate
- Tenancy Management
- Litigation & Disputes
- Corporate & Commercial

Attleborough | Aylsham | Dereham | Diss | Norwich | Walton | Wymondham

Lexcel  
ACCREDITED

[www.spiresolicitors.co.uk](http://www.spiresolicitors.co.uk)



# Rosedale FUNERAL HOME

Providing the very best care.  
We have established our  
reputation by providing  
an exceptional  
service at an  
affordable cost.



- BEREAVEMENT SUPPORT GROUP
- ADVICE ON FUNERAL GRANTS

A family  
business –  
we believe it  
makes a  
difference



Yard House  
High Street  
Attleborough  
NR17 2EH

24 HOUR TEL  
**01953  
452538**

C.A. Rush Ltd., t/a Mill House Garage

# MILL HOUSE GARAGE

THE COMMON, NEW BUCKENHAM

Tel: 01953 860 572-Fax: 01953 860 090

E-Mail: [clive.rush@btconnect.com](mailto:clive.rush@btconnect.com)

## EVERYTHING FOR THE MOTORIST...

M.O.T Station inc. Diesel and Catalyst cars

Full Diagnostic Facilities

Up-to-date E.C.U - Engine Management Scanner

## Servicing

Exhausts, Batteries, Welding, Bodywork. Fully Equipped Tyre Bay

Insurance and Accident Repairs

**Breakdown Service**

## AIR CONDITIONING SPECIALISTS

All makes of tyres at very low prices

**WE WILL COLLECT AND RE-DELIVER YOUR CAR**

## John Underwood Antiquarian Books

from 16<sup>th</sup> to 19<sup>th</sup> centuries

**Newspapers from 17<sup>th</sup> century**

**Modern First Editions**

**Children's Books**

**from Pooh to Potter**

All the above and much more!

Book Room and Bindery open most  
days .. please check before  
visiting.

**BOOKS WANTED**

**TO PURCHASE**

**BOOKBINDING CLASSES**

Plum Tree Farm, Uppate Street,

Carleton Rode Tel: 01953 860746

[www.johnunderwoodbooks.com](http://www.johnunderwoodbooks.com)

## SWEEPERS

Chimney and Flue Cleaning Services

FOR A PROFESSIONAL SWEEP



Call Marty on:

**01953 888544**  
**07826 595385**

Email: [marty.the.sweep@gmail.com](mailto:marty.the.sweep@gmail.com)

**EVENING AND WEEKEND SERVICE AVAILABLE**

# A Pre-Christmas Treat

New Buckenham Players extended their repertoire before Christmas with their exciting and enthralling performances of *The Lion, the Witch and the Wardrobe* by C.S. Lewis.

This is a story that has frightened and delighted children and adults for many generations. It is a complex story linking themes of human frailties, hope, spiritual need and fear for the future. As I was watching, I realised how relevant and apt its themes were for today.

It was wonderful to see so many young actors on the stage: fourteen out of the cast of twenty-six, all of whom were enjoying themselves and taking on and excelling in lead parts. The four children were beautifully acted by Annabelle Hartley, Barnaby Grindley, Clodagh Lohan and Emma Frith. They all portrayed their characters sensitively and with feeling.

I loved Mr and Mrs Beaver played by Brian Grindley and Sam Allen, who really became Beavers in my eyes! We all felt so sad for poor Mr Tumnus played by Ollie Allen and hated him as the wicked Fox! The White Witch was evil personified in the form of Lilly Hodges, who was beautiful and nasty in equal measure.

It was so evident that everyone on stage was thoroughly enjoying themselves, whatever their role, and completely entering into their part. This allowed the audience to be transported into the magical world of Narnia.

I have a special mention for the crew, who again surpassed themselves with the set design, but their masterpiece for me was the puppet of Aslan. Creatively, the team made Aslan an enormous, magnificent believable lion who was brought to life by Holly Warren and Susie Clarke. Aslan's mask was a work of art, cleverly designed and made by Sarah Nash.

Continued overleaf...

The crew and the audiences will, I am sure, sadly miss Gill Goodwin who has led and guided the set creation for many, many years. Thanks also to Tom Nash who brought us straight into the story with his clever writing of the prologue.

Finally, I would like to say THANK YOU to Sally and Ellie for having this amazing idea and executing it so memorably. What will they do next?

*Felicity Thomas*

## Good Companions

At the meeting in November we were entertained by Rick Hallam, who stood in for Susan Jayne, who was sick. He is someone we would love to see again!

The December meeting was the Christmas lunch, which was enjoyed by all. Despite the disappointing entertainment, we would like to thank Father Christmas and his elf for coming.

On Boxing Day, our Chairman, Tommy Winser, passed away. We would like to pass on our condolences to Rosemary and family.

The first meeting of 2020 will be on Thursday 20th February at 2:30pm in the Village Hall, which will be the usual mardle.

*Christine Wilby*

## New Arrivals

We would like to extend a warm welcome to:

Tom and Cheryl Underwood and family, who have moved into Redroof, King Street;

Fiona Paul, moving into The Cottage, King Street.

*Parish News Committee*



# The Orchard Montessori

Preschool & Nursery

OFSTED registered

**NEWLY OPENED!**

- Free spaces available for 2, 3 and 4 year olds
- Idyllic rural location
- Full Montessori Programme in line with the Early Years Foundation Stage (EYFS)
- Experienced and qualified staff and management team
- High staff/child ratios
- Exceptional indoor/outdoor play opportunities

**The Orchard Montessori Preschool & Nursery  
The Fen, Banham NR16 2BU**

t: 01953 887863 m: 07443658586  
e: [theorchardmontessori@gmail.com](mailto:theorchardmontessori@gmail.com)  
[www.theorchardmontessori.co.uk](http://www.theorchardmontessori.co.uk)



## Pete Vale



**Professional  
Painter, Decorator  
and Airless Sprayer**

Accredited by the P.D.A  
High quality, friendly service  
Fully insured  
Free quotations

**T 01953 861 230**

**M 07986 114 108**

**E [peter.vale@hotmail.co.uk](mailto:peter.vale@hotmail.co.uk)**



**PValeDecorating**



# Andy Free

Dip FD



*Independent family funeral director*

*'Quietly helping and guiding bereaved families for many years now, our family team offer guidance and direction at a time most needed'*

*Pre-paid Funeral Plans and Memorialisation Available*

**Attleborough 01953 452455**

**Wymondham 01953 605222**

[attleborough@andyfree.com](mailto:attleborough@andyfree.com)

[wymondham@andyfree.com](mailto:wymondham@andyfree.com)

**24 hour service**

# New Buckenham Parish Council

Our next meeting will be held on Tuesday 11th February at 7:30pm in the Large Meeting Room at the Village Hall. A warm welcome is extended to all parishioners.

All meetings are held on the second Tuesday of the month at 7:30pm in the Village Hall. The dates for the 2020 meetings are: 11th February; 10th March; 14th April; 12th May; 9th June; 14th July; 8th September; 13th October; 10th November and 8th December.

The Parish Council does not meet in August.

*Karen Hobley - Chair*

*01953 860529 / [karenhobley@hotmail.com](mailto:karenhobley@hotmail.com)*

## New Buckenham Parish Council

**Chair:** Karen Hobley  
(01953 860529 / [karenhobley@hotmail.com](mailto:karenhobley@hotmail.com))

**Vice-Chair:** Andrew Bingham  
(01953 861150 / [andrew.bingham100@gmail.com](mailto:andrew.bingham100@gmail.com))

**Councillors:** Don Crossman (01953 861246)  
Mary Dowson (01953 860320)  
Steve Highton (01953 860499)  
Mary Manning (01953 861242)  
Paul Martin (01953 861117)

**Clerk:** Trevor Wenman  
(01379 641423 / [parishclerk@newbuckenham.net](mailto:parishclerk@newbuckenham.net))

The Parish Council meets at 7:30pm in the Village Hall on the second Tuesday of every month. Further information about the Parish Council can be found on our notice board on the Village Green or on our website [www.newbuckenhampc.info](http://www.newbuckenhampc.info).



# Kings Stores

We offer a wide range of services and supplies including groceries, fresh meat and veg, newspapers, lottery, dry cleaners and lots more ...

**Opening Hours: Monday – Saturday 7 am to 7 pm  
Sunday 8 am – 12.00 pm**

Post Office: Wednesday 9.30 am – 12.00 pm

Why not call in and give us a try?

Look out for our special offers!

01953 860264

## C.W.S

**Painter & Decorator**

**Fencing, Paths & Patios**

Over 25 years of professional  
service to you

Call for a free no-obligation quote

Clive: 07789 992085 / 01953 869376

[willowsofdiss@gmail.com](mailto:willowsofdiss@gmail.com)

***Breckland Brush  
Chimney Sweep  
& Stove Installation***



NATIONAL ASSOC. OF CHIMNEY SWEEPS

Qualified Experienced Professional

[sweep@brecklandbrush.co.uk](mailto:sweep@brecklandbrush.co.uk)

01953 881579 / 07966 298777

# Last Orders at the Inn on the Green

As you may have heard, The Inn on the Green will cease trading on March 29th, when we will be serving our last Sunday lunch. The Inn has been fully advertised on the property market for the past two years without success, so we feel that financially and personally, it is now time to close.

When we bought the building back in 2011 it had stood empty and neglected for two years, as had the Kings Head for even longer. Both their previous owners were bankrupted through lack of business, but we decided to try and revive at least one of them after many requests from local people to do so.

After a few years of good trading at The Inn, the King's Head reopened under Mr Tunmore, taking away all of our drinking trade, so subsequently we became just a restaurant. Two years later the King's Head was then sub-let to the present tenants, who began serving good food, and a new cafe also opened, serving light lunches, sandwiches, etc., affecting our sales even further. The small amount of custom generated from a village the size of New Buckenham cannot possibly sustain all of these catering outlets. In addition, the King Street shop now has an off licence and Carleton Rode social club has become a popular place for local drinkers.

All of these elements have combined to reduce our customer base by 40% in the past four years and with our overheads constantly increasing The Inn is no longer a viable concern. We do not wish to lose everything we have worked so hard for.

Being 72 and 64 years of age, not in the best of health and both working a tiring average of 50 hours a week over 6 days and nights, it really is time for us to hang up our corkscrews and retire. Surely everyone of us deserves a few last years of rest and relaxation? We will continue to live in and be part of New Buckenham village life.

We want to sincerely thank all our lovely loyal customers and say how much we have appreciated your support and friendship, here and at The Gamekeeper, over the past 12 years. Know that we will miss you!

*David & Julie*

## Biz Buzz January 2020

[www.np4nb.online](http://www.np4nb.online)



This month:

- ⇒ How festive was the biz life for other on street retailers over Christmas/New Year? You might be surprised. They were!
- ⇒ Homage to Biz Guru, Sara Greenfield, who died at the end of December. You met her if you came to our first Biz Chat only a year ago.
- ⇒ And, of course, the New Year News of the Mobile Phone Mystery!

If you have any biz notes please send to: [info@np4nb.online](mailto:info@np4nb.online)

Biz Buzz is a group of business folk and wannabes in and around New Buckenham spreading the news, offering support and swapping contacts.

*Janet Trewin*

# Jan Prior

There are some people who will enter our lives and immediately a strong bond of friendship is formed. For me, Jan Prior was one such person. Our friendship was forged, with other great friends, through Village&Vestry. It was a cause very close to her heart. We bonded, along with Pauline Dynes, over coffees, lunches, meetings, trips, chats, and even through good old WhatsApp messages!

Jan was a doer. When she said 'I'm going to...' then you knew it was going to happen! She was a strong, intelligent, independently minded woman, and proud to be so; a daughter of the earth, who was centred to her place in the world, and caring so much about it and its future.

She was a calm and caring influence with the ability to persuade, soothe ruffled feathers, and despite her own 'dance' with cancer, find time for those who suffered, were distressed or just fancied a cuppa. You'd always be guaranteed a warm welcome.

In amongst all of the living Jan was determined to experience, we know her many treatments and procedures continued, yet what she achieved was far more than many of us will ever encounter. Jan was key in organising V&V, posted flyers galore, shopped, decorated, gardened in the church grounds, sorted her allotment, stood as a local candidate for the Green Party, looked after her 'chooks', became a founder member of the Climate Action Now group, performed with the Gissing Singers, started to write her book... and it goes on! She was passionate about our community and all it represented, and it's hard to believe that she often became frustrated that she couldn't do more!

Jan talked about creating more 'hygge' in her life. Yet, Jan personified 'hygge', displaying genuine warmth and compassion through her calm persona. With her giggles, warm

hugs, good sense of humour and a way of making folk feel at ease, Jan was a popular lady and a good friend. She baked a mean rhubarb cake and veggie bites, knitted great woolly socks, wove together a super pew-end display, and always had something to donate from her boxes of goodies. She loved the life both she and Gordon had created as part of the 'Hippy Hill' crew, and the friendships and life formed here in our village were so important to her.

She was an inspiration, but Jan would hate to have been seen as such. What Jan immersed herself in, so wholeheartedly, was based on belief, concern and compassion. She lived life not wanting sympathy or disquiet, just acceptance as 'Jan'. Nonetheless, hope gave way to accepting that the dance was coming to an end — all too soon.

Like so many here, I am proud to have been able to call Jan, my dear, dear friend. I will miss her.

*Maria Lloyd*

All of us who knew Jan will have special memories of an extraordinary, passionately idealistic woman.

A professional psychologist who ran the Blackthorn Trust, an innovative therapy centre, before she came to live in New Buckenham, she had the ability to communicate even the most difficult thoughts and feelings with enviable clarity.

She was a skilled mediator and peacemaker, but if she decided that a person or situation needed confronting she never flinched. That distinctive calm quiet gentle voice could be deceptive. Jan was no pushover.

*Annie Dalton*

# Our Planet Needs Us

For anyone who has yet to be convinced, these past few weeks have delivered indisputable evidence of a catastrophic level of climate change: the apocalyptic bush fires in Australia, which are currently destroying wildlife and ecosystems at an unprecedented rate, causing glaciers across the sea in New Zealand to turn brown; the thawing of ancient permafrost in Siberia, which has exposed 28,000-year-old human artefacts; the shocking appearance of plant life on Mount Everest. The sheer scale of destruction on our planet is overwhelming. But we can't just stand by as horror-struck spectators. This is our moment to act, our time to step forward. To adapt Lord Kitchener's famous First World War slogan for our own times: Your Planet Needs You!

OUR planet needs US — every single one of us has a part to play in responding to this global emergency.

In November, our newly-formed climate action group made a small symbolic beginning when we planted an oak tree on the village green. Many of you came to tie your hopes and wishes for our planet onto its branches. One lady wrote movingly that she wanted her grandchildren and great grandchildren to grow up to see the tree that their Nanny saw being planted.

We all want to save our planet, our only home, for future generations, and so we compost and recycle and try our best to reduce our reliance on single-use plastic. But as individuals we can feel understandably helpless in the face of such enormous climatic events. As I was writing this piece, I suddenly remembered reading that the Chinese character for 'crisis' also stands for 'opportunity'. I believe that the current climate crisis also offers a golden opportunity for communities to come together to create a kinder, saner, more environmentally friendly world.

Continued on p.24...

## 200 Club Lucky Winners

Thank you for your continued support of the Village Hall.  
Here are the lucky winners for December's draw. If you would like to join the 200 Club, please call Paul Madden.

£50	Peter Cranfield, Sarah Highton
£30	Laura Crossley, Jill & Ian Ashford, Richard Hoggett, Sharon & Robert van Duin
£20	Maria Lloyd, Stephen Bird, Janet Trewin, Philip De La Cours, Lou Gault

## R.BUNN ELECTRICAL

Richard Bunn

*LED Lighting - Indoor/Outdoor Lighting*  
*Extensions - Rewires - New Builds*  
*Additional Lights & Sockets*  
*Mains Upgrades*

07899936057

Competitive Hourly Rates  
R.BunnElectrical@Gmail.com

No V.A.T  
Part P Approved

In next month's *Parish News* we'll be announcing a date for a special event to launch a tree-planting pledge, a sustained programme for planting more trees locally. Obviously climate action is not solely about planting trees, and in the coming months we are going to need everyone's ingenuity, and expertise to come up with creative ways to help us fight climate change locally. If you would like to be involved, or have ideas or special skills to share, please do message us at: [newbuckenhamcan@gmail.com](mailto:newbuckenhamcan@gmail.com).

Before I sign off, I want to acknowledge the premature loss of Jan Prior, who was an utterly irreplaceable member of New Buckenham CAN. Even in the last weeks of her illness she seemed able to draw on some extraordinary inner life-force, remaining passionately engaged right up until the final days of her life. There is no doubt that we are infinitely poorer without her. But the best way to honour Jan is to emulate her passion and commitment by continuing what she started and this is exactly what we're determined to do.

*Annie Dalton*

## Half Price Book Sale

Help us make room for more stock in our popular and successful book stall. From now until mid February, paperbacks are 25p, hardbacks 50p, children's books free or for a suitable donation. There are loads of fiction, some very new, biographies and food titles, plus a variety of other topics.

Back of St Martin's church, every day, dawn to dusk. No hassle, just put the money in the box!

*Susan and Ian Jowett*

860929



## Iron-4-You

**Professional and friendly  
ironing service from me to  
you**

**Call Debra 07789 992085 /  
01953 860376**

[willowsofdiss@gmail.com](mailto:willowsofdiss@gmail.com)

**Let me do your pressing and stop  
your stressing!**



### Slimming World with Amy

Feel your best in 2019 where a world of support and friendship awaits!

**Monday** – New Buckenham Village Hall  
5.30 & 7.30pm

**Thursday** – Attleborough Scout Hut  
(near the train station)  
9.30am

Pop along or contact Amy  
07590 806046



# SMART GARDENS

**Lawns and Borders Maintained**

**Spring and Autumn Pruning**

**Hedges Trimmed**

**For free quote ring Vicky or Alan**

**01953 860451 / vickyal0712@gmail.com**

## St Martin's Church

### February 2020

Sunday 2nd	11:00am	Parish Eucharist	Candlemas
Sunday 9th	11:00am	Parish Eucharist	3rd Sunday before Lent
Sunday 16th	11:00am	Mattins	2nd Sunday before Lent
Sunday 23rd	11:00am	Morning Worship	Next before Lent
Wednesday 26th	7:30pm	Grp Communion, Old Buckenham	Ash Wednesday

### **Tacolneston Osteopaths**

Yvonne Ayliffe D.O.FSCCO BSSCMD MICrA

Chloe Savage M.Ost Ian Lewis B.Ost

9 The Fields, Tacolneston

**Tel: 01953 789629**

**07770652839**

[reception@norfolkost.co.uk](mailto:reception@norfolkost.co.uk)



- Experienced osteopath qualified for 37 years
  - Gentle Osteopathy for the elderly
  - Cranial Osteopathy
  - Headaches and migraine, acute necks
  - Sporting injuries, accidents & whiplash
  - For muscular and joint problems
  - Repetitive strain injuries at work or at home
  - Pre- & post- pregnancy for mother and baby
- OSTEOPATHY FOR ALL**

## **Darren Rush**

### **BUILDER & DECORATOR**

**All types of building work undertaken including: -**

- **Specialising in Older Properties**
- **Extensions / Loft Conversions**
- **Roofing**
- **Property Maintenance**
- **Landscape Gardening**

**MOBILE: 07778 602 026**

**HOME: 01953 860 693**



# Dates For Your Diary

The Village Hall Bookings Administrator is Stevie Hobley

01953 860463 ~ 07469 715517 ~ [bookings@newbuckenhamborough.co.uk](mailto:bookings@newbuckenhamborough.co.uk)

## February 2020

Monday 3rd	Winter Warmer Café, Village Hall, 3:30pm
Tuesday 11th	Parish Council, Village Hall, 7:30pm
Friday 14th	Neighbourhood Plan Consultation Deadline
Sunday 16th	Snowdrops at the Castle, 1pm – Dusk
Thursday 20th	Good Companions, Village Hall, 2:30pm
Saturday 29th	Film Night: Judy, Village Hall, 7:30pm
Monday 2nd March	Winter Warmer Café, Village Hall, 3:30pm

Contributions for the March 2020 issue of *New Buckenham Parish News* should be submitted by 6:00pm on Thursday 20th February 2020 to Linda Bryan, Pine Cottage, Marsh Lane (861107), Michael Boswell, Peel House, Chapel Street (860015), Richard Hoggett, 9 Church Street (860136) or by email to [editor@newbucknews.co.uk](mailto:editor@newbucknews.co.uk).

TO ADVERTISE: please contact Mary Dowson on 01953 860320 or [mdowson@btinternet.com](mailto:mdowson@btinternet.com)