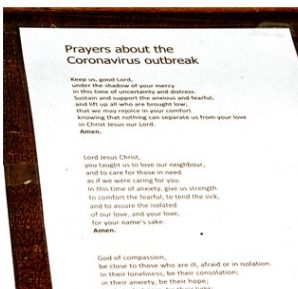


New Buckenham Parish News

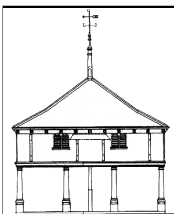


Signs of the times



May 2020





New Buckenham Parish News

May 2020

Coronavirus

As the Government have extended the measures introduced in late March at least until 7th May, this issue of *Parish News* will also only be available online. Of course, the restrictions on our social and day-to-day life will continue and we support everyone's patience and effort to help save lives and protect the NHS and other key workers.

We will continue to produce online-only versions of *Parish News* in order to get important news to you, so please do keep your contributions coming in.

It is possible to access an online version of *Parish News* at <http://newbuckenham.net/index.php/parish-news>. If you find yourself with time to fill, you can download back-issues of the magazine from 2017 onwards!

It is also possible to receive your copy of *Parish News* by email, and if you would like to do this you can sign up for our mailing list here: <http://eepurl.com/dhB-1P>.

We continue to wish you all the best during this difficult time. Look after yourselves and each other.

Parish News Committee

Opposite: New Buckenham residents clapping for key workers on Thursday 30th April. Photos supplied by Charles Oxley (top) and Mike Boswell (bottom).

New Buckenham Parish Council

The May Parish Council meeting will take place on Tuesday 12th May at 7:30pm. I think it is unlikely that we will be meeting at the Village Hall, so the meeting will take place via Zoom. You will need to download Zoom onto your laptop, tablet or phone. On the day of the meeting, visit the NB Parish Council website (<https://www.newbuckenhampc.info/>) and you will find details of how to join the meeting. All parishioners are welcome to sign in.

Contact details for the Parish Council are elsewhere in this *Parish News*. Please contact myself or any other councillors if you need further information about the meeting or any other Parish Council matters.

Please note that the Play Area is closed until further notice.

We are fully aware of our responsibility to safeguard our youngsters and have taped it off on two occasions.

Unfortunately, the tape has been subsequently removed on both occasions. We are committed to re-opening it as soon as we are able to, but, in the meantime, please could everyone spread the word that it is closed.

We have been planning for a while to put some sensory equipment on the Play Area and are looking to purchase something from a company called Handmadeplaces, which has a very good website. We would love to have suggestions from the youngsters in the village of what we could buy, accompanied by drawings if you have a spare Art lesson! Please ensure that your name is on your drawing and put through the letterbox of 9 St Martin's Gardens, while observing social distancing rules of course, and maybe as part of your daily exercise! (Incidentally, the Handmadeplaces website has some excellent Art and Craft resources to download!)

Continued on page 6...

BEAUTY BOX

AND FOOT HEALTH PRACTICE

Dermologica facials / Body treatments

Aromatherapy and Swedish massage

Indian Head massage

Manicures / Pedicures

Nail extensions

Waxing Electrolysis

General foot care / nail cutting

Corns / Hard Skin

Ingrowing toe nails

Verruca treatment / Diabetic Feet

HOME VISITS AVAILABLE

Gayle Wilby Dip CFHP / MPSPract

A MEMBER OF THE ALLIANCE OF PRIVATE SECTOR
PRACTITIONERS

1 Norwich Road, New Buckenham

Tel: 01953 861 021

Just Ask

Property Maintenance

for all your property requirements
specialising in Kitchens and Bathrooms

Free No Obligation Quotes

Just Ask Paul

on

01953 861476 or 07584 283624

email: justaskpaul1@yahoo.co.uk



HAND-MADE WINDOWS
DOORS, KITCHENS
AND FURNITURE

JB CARPENTRY



EVERYONE IS TALKING ABOUT
JAMIE'S HAND MADE WOODWORK
TELEPHONE JAMIE ON
01953 860 933

Broadland

TREE SERVICES

- Tree Surgery
- Consultancy
- Landscaping
- Stump Grinding
- Wood chippings for sale
- Access Hire

J K Anderson
NDF F. ARBOR. A

P J Anderson
ND. ARB

The Limes, Rothbury Rd, Wymondham

t: 01953 607715

Sycamore House, Tanning Lane, New Buckenham

t: 01953 860370

www.broadlandtreeservices.co.uk

On the subject of daily exercise, please may we issue a reminder to dog walkers to clear up after their pets and to use the dog bins provided. These are still being emptied regularly. They are situated in Marsh Lane, at the entrances to the castle and St Martin's Gardens, and near the Play Area car park. We have had a few complaints about dog walkers not clearing up after their dogs or clearing up, but then leaving the bags in random places. Please look after our lovely village.

These are difficult times and, to end on a positive note, the Parish Council would like to thank everyone in the village for 'stepping up to the plate' and supporting each other in so many different ways.

Stay safe, stay well and stay at home. Many thanks.

Karen Hobley 01953 860529 / karenhobley@hotmail.com

Summary of Draft Minutes March 2020

1. Apologies – None
2. PC resolved to approve draft Minutes February meeting.
3. Declaration of Interest – None.
4. Public Participation
 - a) Parishioners' Comments: The Climate Action Now Group had purchased some trees for possibly planting on the Common alongside the Cricket Pitch. It was noted this must be done in consultation with Highways and the CC. The organisers agreed to provide a map showing the proposed location for the trees.
 - b) VE Day 75th Anniversary Celebration: The King's Head was planning a celebration on the Market Place. Parish Councillors indicated their support for the event.
 - c) District/County Cllr: Cllr Askew reported that Marsh Lane is scheduled for resurfacing in the next year or so.

- d) Parish Councillor Reports: Cllr Bingham raised the issue of County Broadband which was seeking interest in their scheme to bring fibre broadband to the village. It would require 40–50 households to make it financially viable.
- 5. Financial Matters
 - a) Financial Report for February was received and noted.
 - b) Payments for March were approved.
- 6. Planning

No new applications received.

Decisions: Teasel Cottage, Chapel Street – demolition of existing conservatory to be replaced by single-storey extension and new single-storey outbuildings to the rear of the garden - approved.
- 7. Neighbourhood Plan.

Council received an update, the latest consultation closed on 14th February. Responses were being collated by the Steering Group, they will be placed on the website together with a response from the Steering Group to the issues raised. Comments from 27 individuals, three village organisations, five statutory consultees and two landowners had been received. A letter to the PC from Mr Charles Stimpson was noted. It raised certain issues where he considered the PC was at fault, it was agreed the Clerk would draft a response to be copied to Councillors before dispatch. His comments on the Plan itself will be dealt with by the Steering Group in the normal process.
- 8. Amenities
 - a) Closed Churchyard

The Council discussed and agreed the wildlife management plan. This would require the grass to the south to be cut regularly and to the north to be cut in October each year.

Continued overleaf...

The Council discussed and agreed the draft policy on the planting of memorial trees in the Churchyard.

b) Play Area

Councillors discussed purchasing sensory play equipment with outstanding Section 106 monies. Cllr Manning will measure the space for installation of a piece of equipment. Cllr Martin to investigate the possibility of installing some adult exercise equipment.

Please note that subsequent to this meeting the Annual Parish Meeting was cancelled following government advice. Revised arrangements for Parish Council meetings can be found on the Parish Council website: <https://www.newbuckenhampc.info/>

Mary Dowson on behalf of the Parish Council

Helping Hands in New Buckenham

If you are self-isolating, there is a group of volunteers within the village who are willing to help in the following ways:

- ⇒ Picking up your shopping
- ⇒ Picking up urgent supplies (e.g. medication, etc.)
- ⇒ Posting your letters
- ⇒ Walking your dog
- ⇒ Contacting you by telephone to check that you are alright

If you need help, please ring Alice and Richard on 01953 860136 and we will pass your details on to a volunteer who will do their best to help. If you'd rather email it's alicecattermole@hotmail.com or you can text us on 07900 272524. We will usually be available between 8am and 9pm and will check our messages frequently throughout the day. Kings Stores can be contacted on 01953 860264 or by email at suecat64@outlook.com.

St Mary's Residential Care Home

Market Place, New Buckenham, Norfolk, NR16 2AN

tel: 01953 860 956 email: manager@stmaryshome.co.uk

A home from home, at St Mary's, we offer 24-hour person-centered care within safe, warm and friendly surroundings with an emphasis on providing a high quality of life.

- Care services offered include day care, respite, dementia, palliative, end of life and long/short-term residential care
- Day care services include hot meals & refreshments
- Freshly prepared meals, including catering for special diets - Consistently received highest Food Hygiene rating of 5 star
- Single occupancy rooms, passenger lift, two enclosed gardens, Wi-Fi, nurse call facilities, wheelchair friendly wet room and a hair salon
- Residents enjoy engaging and stimulating activities
- Top ratings by residents, family & friends and healthcare professionals
- Social Services and self-funding residents welcome
- Self-funding residents offered very competitive rates
- Care package tailor-made to meet your requirements
- No-obligation free trial day offered

**For further information or for a fact-finding visit, please contact
the manager on 01953 860 956 or email
manager@stmaryshome.co.uk**

Registered and licensed to provide services by the Care Quality Commission (CQC)

- Under new management -

Enjoy our wonderful orchids

While taking your exercise over the next few weeks there are few more wonderful sights at this time of year than the rare expanse of orchids on the Common. There is plenty of other wildlife to appreciate, too. Following sensible guidelines, please respect social distance — there is plenty of space!

Michael Boswell



***When you need some help
around the house....***



...call the Cavalry

- **Domestic cleaning**
- **Ironing / laundry – collection and delivery service**
- **Dog walking / feeding – daily home pet service whilst you are on holiday or at work**
- **Errands – any form of shopping, collection or delivery**

**Whatever your task,
we will endeavour to tackle it
to your satisfaction**

There are occasions when everyone could do with a little help around the house – in times of illness, disability or simply from pressure of a busy lifestyle.

Whether you need assistance on a regular basis or just occasional help, Household Cavalry is here to provide a dependable, diligent and trustworthy service.

Our carefully selected, fully vetted and insured team can tackle a whole range of household tasks.

Our fee structure is flexible to accommodate your needs, so if you would like more information about our services or a quotation, **please contact Sally on:**

01953 488635

07900 894902

Household Cavalry Limited

**Slate Plantation Barn, Home Farm Lane,
Merton, Thetford, Norfolk IP25 6QS
sgt.major@householdcavalryltd.co.uk**

***Buckenham House
Holistic & Beauty Therapies***

Facials
Reflexology
Indian Head
Massage ~ Swedish, Hot Stone, Lava Shell
Pregnancy Massage
Hopi Ear Candling
Manicure & Pedicure
Eyelash & Brow Tinting
Waxing

Using Eve Taylor, OPI, OPI Pro Spa, OPI Gelcolour, Orly,
Orly GelFX, Songbird and GiGi Wax Products

Beauty & Holistic Therapist NVQ3 and fully insured.
Member of the Association of Reflexologists

To book an appointment or for enquiries
Contact Jane on
01953 860013

OR



New Buckenham Rd, Old Buckenham, NR17 1PW

WOMACK
BUILDING SUPPLIES LTD



01953 788077

07770 388314

07796 638877

info@womackbuildingsupplies.co.uk

Architectural Salvage

Spring Blossom Quiz

Here is a selection of images of different types of white spring blossom taken around the village by Charles Oxley. Can you identify all of the different species? Answers on page 18.

1.



2.



3.



4.



5.



6.



Memories of New Buckenham

Since we've all got nothing better to do than stress out and try desperately to be optimistic, here is a New Buckenham 'Think' moment. Frankly, most would agree that at this moment in history we are very lucky to be in a rural place like this. So muse, if you will, on modern times or times gone by; on how you came to be here in the first place or how you visited; incidents that happened; whatever... it's NOT a survey... just an idle thought or two. Interpret the questions how you fancy and respond long or short. If you want to spread your thoughts, send them to *Parish News*, anonymously if you prefer.

Some ideas to get you started: why you came to New Buckenham; thoughts about the castle or church; a vivid memory or observation; a good story, from old times or new; childish thoughts... bonkers ones or kiddy things!

The first responder is Terry Jones – you can see below what memories the questions prompted.

Janet Trewin

Home Thoughts from Abroad

Background: Terry Jones is an honorary New Buckenham resident, having been visiting twice a year every year for more than 30 years. He lives in Belfast. It started as he attempted to flee the torment of the annual Northern Ireland Marching season and came, with his wife Fiona and their first daughter Sarah, to visit Ross and Janet who lived in Cosy Cottage, Church Street. Terry and Fiona were in New Buckenham in March this year and scurried back to Northern Ireland just as the lockdown was brought in.

Janet Trewin

Terry Jones writes: We first came to New Buckenham in July 1987 to visit friends and watch wildlife. Back then our hosts were living in Cosy Cottage in Church Street and very "cosy" it



Terry & Fiona Jones, daughter Sarah and Ross Marshall, 1987

was. Just one bedroom upstairs and one room downstairs. People always used to say to them, in a somewhat disparaging way, “How quaint that name is”. Then they’d go inside, settle down by the wood-burner and, in no time, find themselves blurting out, “Wow! This place is so cosy!”

To us, on the memorable sunny evening of our first arrival, it was just an utterly delightful, tiny house full of character – but it was tiny! Little did we know when we accepted the offer to visit that there would be no room for our hosts to stay as well. They moved out and stayed in the B&B above Lovells, which also had the Post Office and later a bakery at the back.

The George pub (latterly, The Inn on the Green) was just across the road. Ross would sometimes say, “Fancy a pint?” And when we agreed, he’d step over to the pub and come back with pint mugs filled with beer! Now that’s what I call an off-licence service! It was an early indication of how much more relaxed things were in New Buckenham than they were in still

trouble-torn Belfast. The bombings and shootings are almost unimaginable now, but the stress and pain of the politics – especially with a young family – was horrendous. It's one of the reasons we fell in love with this village from the outset. Apart from anything else, it looks charming. I remember noticing all the lovely pottery plaques with names and numbers outside so many of the houses. They were produced by potters Bill and Dorothy Silk, who lived in King Street.

Being keen naturalists, we had hoped to see some of East Anglia's famous birdlife on our visit. Our friends took us for a picnic at St Helen's Picnic site at Santon Downham. As we ate, we spotted some bird activity, but only realised some years later how extraordinary the scene was. We were seeing a nesting pair of Red-Backed Shrikes. We now know it was one of the last breeding pairs in England. They returned to the same site in 1988 and then they were gone.



Sarah

The Drift 1989

Another ambition was to see a Bittern. Due to their rarity and notoriously skulking habits I held out little hope, yet as we were walking the paths at Cley – a mecca to me – I noticed a dark shape, deep in the keel, flying towards us and directly overhead. Unbelievably it was Bittern. Breath-taking in the late afternoon sun. We were genuinely thrilled. We've had other sightings since, but nothing has surpassed that first, fabulous occasion. Norfolk had delivered, and has continued to do so ever since... for more than 30 years. For us, New Buckenham is a second home.

This picture is a lovely memory: 1989, daughter Sarah joyously racing towards the Castle. Our second daughter, Kirsty, did her science degree at UEA and met her husband in Norfolk. Proof positive that morphing out of bad times like the troubles in Northern Ireland can come beautiful times, strong friendships and changed lives. It's a lesson for 2020 too, perhaps.

Terry Jones, Belfast

Spring Blossom Quiz Answers

1. Chestnut
2. Hawthorn
3. Choysia
4. Quince
5. Apple
6. Crab Apple

Biz Buzz April 2020



Biz Bods Battle to Stay in Business...

Keep calm and carry on... and, as Biz Buzz has been saying, just keep trying. The businesses in and around New Buckenham have been taking that advice. Some have had to close, some are still open. All of them want to say a big thank you to residents and locals who have encouraged and helped them in many ways. It's important that everyone understands the pressure these businesses are under, so read on:

KINGS STORES: The village is hugely relieved that New Buckenham's shop is still open... and, incredibly, stocks look good. Sue Cattermole says some supplies are hard to find, but most are now getting through. She even managed to find flour! The part-time Post Office has shut down and, for some reason best known to itself, so did the shop freezer! But, not to be defeated, a new one was soon up and running. Villagers are to be heard calling from the door if they are uncertain about how many are inside – there's a two people only rule – but it's a small price to pay to still get what we need!

ANGEL CAKES: Sadly, there's no activity next door in Angel Cakes. After two years of baking, cleaning, serving, doing the accounts, posting the publicity and becoming a social hub in the village, they were forced into closure as 'non-essential' (a matter of opinion!). Ryan and Stacey Enever are determined. Ryan says, "We miss work a lot and miss seeing everyone. I know many people are worried if their businesses can survive, but I'm quite optimistic thanks to how much support we have had from the locals." Ryan is preparing for the comeback. "We're doing better than those who are ill, so we can't complain. It's hard to see a light through all this at the moment, but staying positive is the only tool we have."

Continued on page 19...

C.A. Rush Ltd., t/a Mill House Garage

MILL HOUSE GARAGE

THE COMMON, NEW BUCKENHAM

Tel: 01953 860 572-Fax: 01953 860 090

E-Mail: clive.rush@btconnect.com

EVERYTHING FOR THE MOTORIST...

M.O.T Station inc. Diesel and Catalyst cars

Full Diagnostic Facilities

Up-to-date E.C.U - Engine Management Scanner

Servicing

Exhausts, Batteries, Welding, Bodywork. Fully Equipped Tyre Bay

Insurance and Accident Repairs

Breakdown Service

AIR CONDITIONING SPECIALISTS

All makes of tyres at very low prices

WE WILL COLLECT AND RE-DELIVER YOUR CAR

John Underwood Antiquarian Books

from 16th to 19th centuries

Newspapers from 17th century

Modern First Editions

Children's Books

from Pooh to Potter

All the above and much more!

Book Room and Bindery open most
days .. please check before
visiting.

BOOKS WANTED

TO PURCHASE

BOOKBINDING CLASSES

Plum Tree Farm, Uppate Street,

Carleton Rode Tel: 01953 860746

www.johnunderwoodbooks.com

SWEEPERS

Chimney and Flue Cleaning Services

FOR A PROFESSIONAL SWEEP



Call Marty on:

01953 888544
07826 595385

Email: marty.the.sweep@gmail.com

EVENING AND WEEKEND SERVICE AVAILABLE



The Orchard Montessori

Preschool & Nursery

OFSTED registered

NEWLY OPENED!

- Free spaces available for 2, 3 and 4 year olds
- Idyllic rural location
- Full Montessori Programme in line with the Early Years Foundation Stage (EYFS)
- Experienced and qualified staff and management team
- High staff/child ratios
- Exceptional indoor/outdoor play opportunities

**The Orchard Montessori Preschool & Nursery
The Fen, Banham NR16 2BU**

t: 01953 887863 m: 07443658586
e: theorchardmontessori@gmail.com
www.theorchardmontessori.co.uk



Pete Vale



**Professional
Painter, Decorator
and Airless Sprayer**

Accredited by the P.D.A
High quality, friendly service
Fully insured
Free quotations

T 01953 861 230

M 07986 114 108

E peter.vale@hotmail.co.uk



PValeDecorating



Andy Free

Dip FD



Independent family funeral director

'Quietly helping and guiding bereaved families for many years now, our family team offer guidance and direction at a time most needed'

Pre-paid Funeral Plans and Memorialisation Available

Attleborough 01953 452455

Wymondham 01953 605222

attleborough@andyfree.com

wymondham@andyfree.com

24 hour service

Kings Stores

We offer a wide range of services and supplies including groceries, fresh meat and veg, newspapers, lottery, dry cleaners and lots more ...

Opening Hours: Monday – Saturday 7 am to 7 pm
Sunday 8 am – 12.00 pm

Post Office: Wednesday 9.30 am – 12.00 pm

Why not call in and give us a try?

Look out for our special offers!

01953 860264

THE KING'S HEAD: This is another incredible New Buckenham business where the family has worked ceaselessly over two years to become a key go-to venue. They too were forced to close. Dan and Jenny Leeder have an extra complication: Jen is a chemotherapy nurse. She went into self isolation before the lockdown to enable her vital work to continue whilst the pub stayed open. They've applied for Government grant funding, but, in common with so many others, they've heard nothing. They've lost a lot of stock. Beer does not have an indefinite shelf life. As Jen puts it, "We'll suffer a huge financial dent". But there's worse. "Our biggest task is taking on the insurance company. We are one of just a few selected companies covered for 'non-specific pandemics' such as Covid-19. However, they won't pay out because we can't prove that someone contracted it on the premises. That would be nigh on impossible when, even as a nurse, I couldn't get tested."

Continued on page 21...

Tacolneston Osteopaths

Yvonne Ayliffe D.O.FSCCO BSSCMD MICrA
Chloe Savage M.Ost DPO Chanté Batson M.Ost
9 The Fields, Tacolneston

Tel: 01953 789629

07770652839

reception@norfolkost.co.uk

- Experienced osteopath qualified for 38 years
- Gentle Osteopathy for the elderly
- Cranial Osteopathy
- Headaches and migraine, acute necks
- Sporting injuries, accidents & whiplash
- For muscular and joint problems
- Repetitive strain injuries at work or at home
- Pre- & post- pregnancy for mother and baby

OSTEOPATHY FOR ALL

Also at Aylsham 01263 732028



Breckland Brush *Chimney Sweep & Stove Installation*



NATIONAL ASSOC. OF CHIMNEY SWEEPS

Qualified Experienced Professional

sweep@brecklandbrush.co.uk

01953 881579 / 07966 298777

R.BUNN ELECTRICAL

Richard Bunn

LED Lighting - Indoor/Outdoor Lighting

Extensions - Rewires - New Builds

Additional Lights & Sockets

Mains Upgrades

07899936057

Competitive Hourly Rates

R.BunnElectrical@Gmail.com

No V.A.T

Part P Approved

This is a huge strain and may mean legal action... when all they want to do is keep business and family life going. “Instead we are working like crazy to ensure we come back with a BANG!” Jen tells me, “What’s keeping us going are the wonderful messages of support, and people stopping to say how much they miss the pub.”

CHARLES CLARKE: Charles is a local farmer as well as being the Chair of the Eastern Landlords’ Association. Those attempting to maintain properties are finding it hard, as some trades won’t go into a house where the occupants are in lockdown. Vital gas checks are still being done, but many other matters are on hold. Farming for Charles is “ok”: agrochemicals are coming within two days. “There’s a much longer wait for fuel, but we were fortunate to fill up before this happened.” The dry spell means slow emergence of the spring-sown crops like sugar beet, and promised rain has not materialised. If he has any spare time (not much!) Charles is doing that great re-cycling thing... making new handles for hand tools!

Janet Trewin

New Arrival

We would like to welcome to the village Pam Cole, who has moved into Drover’s Cottage, Church Street.

Parish News Committee

Darren Rush

BUILDER & DECORATOR

All types of building work undertaken including:-

- Specialising in Older Properties
- Extensions / Loft Conversions
- Roofing
- Property Maintenance
- Landscape Gardening

MOBILE: 07778 602 026

HOME: 01953 860 693



Slimming World with Amy

Feel your best in 2019 where a world of support and friendship awaits!

Monday – New Buckenham Village Hall
5.30 & 7.30pm

Thursday – Attleborough Scout Hut
(near the train station)
9.30am

Pop along or contact Amy
07590 806046



SMART GARDENS

Lawns and Borders Maintained

Spring and Autumn Pruning

Hedges Trimmed

For free quote ring Vicky or Alan

01953 860451 / vickyal0712@gmail.com



Outstanding advice
and legal expertise for
the region

How can we help?

- Agriculture
- Conveyancing
- Employment
- Family
- Wills, Tax & Probate
- Tenancy Management
- Litigation & Disputes
- Corporate & Commercial

Attleborough | Aylsham | Dereham | Diss | Norwich | Watton | Wymondham

Lexcel
ACCREDITED
SOLICITORS

www.spiresolicitors.co.uk



Rosedale FUNERAL HOME

Providing the very best care.
We have established our
reputation by providing
an exceptional
service at an
affordable cost.



- BEREAVEMENT SUPPORT GROUP
- ADVICE ON FUNERAL GRANTS

A family
business –
we believe it
makes a
difference



Yard House
High Street
Attleborough
NR17 2EH

24 HOUR TEL
**01953
452538**

New Buckenham Parish Council

- Chair:** Karen Hobley
(01953 860529 / karenhobley@hotmail.com)
- Vice-Chair:** Andrew Bingham
(01953 861150 / andrew.bingham100@gmail.com)
- Councillors:** Don Crossman (01953 861246)
Mary Dowson (01953 860320)
Steve Highton (01953 860499)
Mary Manning (01953 861242)
Paul Martin (01953 861117)
- Clerk:** Trevor Wenman
(01379 641423 / parishclerk@newbuckenham.net)

The Parish Council meets at 7:30pm in the Village Hall on the second Tuesday of every month. Further information about the Parish Council can be found on our notice board on the Village Green or on our website www.newbuckenhampc.info.

Contributions for the June 2020 issue of *New Buckenham Parish News* should be submitted by 6:00pm on Saturday 21st May 2020 to Linda Bryan, Pine Cottage, Marsh Lane (861107), Michael Boswell, Peel House, Chapel Street (860015), Richard Hoggett, 9 Church Street (860136) or by email to editor@newbucknews.co.uk.

TO ADVERTISE: please contact Mary Dowson on 01953 860320 or mdowson@btinternet.com