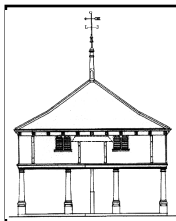


# New Buckenham Parish News



September 2020

**Cover Photo:** In the absence of a fete this year, here is a reminder of past fete days. This photograph was taken not long ago, when the fete was held on the village green. (Michael Boswell)



# New Buckenham Parish News

September 2020

## Macmillan Big Coffee Morning

Our Coffee Morning for Macmillan Cancer Support should have been in September, but under the present circumstances we will not be able to hold this event in the Village Hall. However, as everyone knows, the charity still needs funds to continue with the amazing work they offer. I felt it would be a nice gesture to give something to their funds. If you would like to contribute to this idea, please put your contribution in the collection boxes in Kings Stores or the King's Head or at Mill House Garage.

I hope you agree this will give everyone the opportunity to support this very worthy charity. Over the years we have managed to raise £23,500. It is a huge disappointment that we will be unable to offer you coffee and cakes this year, but hopefully we will be back to normal next year.

*Clive Rush*

## Thank You

We would like to thank the sponsors of this month's edition. We greatly appreciate this support, which helps to fund the production of the magazine.

If you would be interested in sponsoring a future issue of *Parish News*, please contact Mary Dowson (01953 860320 or [mdowson@btinternet.com](mailto:mdowson@btinternet.com)).

*Parish News Committee*

## Helping Hands in New Buckenham

If you are self-isolating, there is a group of volunteers within the village who are willing to help in the following ways:

- ⇒ Picking up your shopping
- ⇒ Picking up urgent supplies (e.g. medication, etc.)
- ⇒ Posting your letters
- ⇒ Contacting you by telephone to check that you are alright

Since lockdown began on Monday 23rd March, our group of 30 volunteers has assisted with over 120 requests for help, including the collection of prescriptions, deliveries of shopping from Kings Stores within the village and further afield, and trips to the Post Office and pharmacy.

If you need help, please ring Alice and Richard on 01953 860136 and we will pass your details on to a volunteer who will do their best to help. If you'd rather email it's

[alicecattermole@hotmail.com](mailto:alicecattermole@hotmail.com) or you can text us on 07900 272524. We will usually be available between 8am and 9pm and will check our messages frequently throughout the day.

Kings Stores can be contacted on 01953 860264 or by email at [suecat64@outlook.com](mailto:suecat64@outlook.com).

*Alice Cattermole*

## Royal British Legion Poppy Appeal 2020

We put a note in last month's *Parish News* to ask if anyone would be interested in taking over the poppy collection, as we are moving from the village.

We've had no response as yet, but if you would like details of what is involved, please email and we will put you in touch with the area organisers.

*John & Elly Newport* ([elly.newport@btinternet.com](mailto:elly.newport@btinternet.com))

# BEAUTY BOX

## AND FOOT HEALTH PRACTICE

Dermologica facials / Body treatments

Aromatherapy and Swedish massage

Indian Head massage

Manicures / Pedicures

Nail extensions

Waxing Electrolysis

General foot care / nail cutting

Corns / Hard Skin

Ingrowing toe nails

Verruca treatment / Diabetic Feet

HOME VISITS AVAILABLE

**Gayle Wilby Dip CFHP / MPSPract**

A MEMBER OF THE ALLIANCE OF PRIVATE SECTOR  
PRACTITIONERS

1 Norwich Road, New Buckenham

Tel: 01953 861 021

## Just Ask

## Property Maintenance

for all your property requirements  
specialising in Kitchens and Bathrooms

**Free No Obligation Quotes**

## Just Ask Paul

**on**

**01953 861476 or 07584 283624**

email: justaskpaul1@yahoo.co.uk



HAND-MADE WINDOWS  
DOORS, KITCHENS  
AND FURNITURE

# JB CARPENTRY



EVERYONE IS TALKING ABOUT  
JAMIE'S HAND MADE WOODWORK  
TELEPHONE JAMIE ON  
**01953 860 933**

## Broadland TREE SERVICES

- Tree Surgery
- Consultancy
- Landscaping
- Stump Grinding
- Wood chippings for sale
- Access Hire

J K Anderson  
NDF F. ARBOR. A

P J Anderson  
ND. ARB

The Limes, Rothbury Rd, Wymondham

**t: 01953 607715**

Sycamore House, Tanning Lane, New Buckenham

**t: 01953 860370**

**www.broadlandtreeservices.co.uk**

# Winter Warmer Drop-In Café

I've been so pleased that several people have asked if this event will be able to start again. The answer is YES..., but obviously dependent upon any spikes in the Coronavirus cases. As you may know, the Hall trustees have put stringent policies in place for users' protection, including sanitiser/wipes at the entrance and throughout the Hall. At the moment, no other group is using the Hall on Monday afternoon/evening, but if this changes then those using the Auditorium will enter through the main door, exit through the side door near the stage and use the ladies' toilets. Those of us in the Large Meeting Room will have access to the gents' loos. This will make sure we are complying with social distancing guidelines.

The dates agreed for the Drop-In Cafe are as follows: 5th October, 2nd November, 7th December, 4th January, 1st February and 1st March – all Mondays from 3:30–5:30pm.

The café is a very relaxed affair – just turn up, enjoy a cuppa, biscuits (sometimes cakes!), chat with others (socially distanced of course!), play cards or other games, bring a favourite CD for us to listen to... whatever YOU would like to do. A nominal charge of £1 is made to cover the cost of the Hall and refreshments.

EVERYONE is very welcome and I'm happy to say that I've met and got to know many more people since the café opened last year.

If you have any questions/ideas please do contact me.

Hope to see you there!

*Kathie Steel (01953 860521 / [kigeary57@btinternet.com](mailto:kigeary57@btinternet.com))*



# The Orchard Montessori

Preschool & Nursery

OFSTED registered

**NEWLY OPENED!**

- Free spaces available for 2, 3 and 4 year olds
- Idyllic rural location
- Full Montessori Programme in line with the Early Years Foundation Stage (EYFS)
- Experienced and qualified staff and management team
- High staff/child ratios
- Exceptional indoor/outdoor play opportunities

**The Orchard Montessori Preschool & Nursery  
The Fen, Banham NR16 2BU**

t: 01953 887863 m: 07443658586  
e: [theorchardmontessori@gmail.com](mailto:theorchardmontessori@gmail.com)  
[www.theorchardmontessori.co.uk](http://www.theorchardmontessori.co.uk)



## Pete Vale



**Professional  
Painter, Decorator  
and Airless Sprayer**

Accredited by the P.D.A  
High quality, friendly service  
Fully insured  
Free quotations

**T 01953 861 230**

**M 07986 114 108**

**E [peter.vale@hotmail.co.uk](mailto:peter.vale@hotmail.co.uk)**



**PValeDecorating**



# Andy Free

Dip FD



*Independent family funeral director*

*'Quietly helping and guiding bereaved families for many years now, our family team offer guidance and direction at a time most needed'*

*Pre-paid Funeral Plans and Memorialisation Available*

**Attleborough 01953 452455**

**Wymondham 01953 605222**

[attleborough@andyfree.com](mailto:attleborough@andyfree.com)

[wymondham@andyfree.com](mailto:wymondham@andyfree.com)

**24 hour service**

# New Buckenham Parish Council

Our next Parish Council meeting will take place on Tuesday 8th September at 7:30pm and a warm welcome is extended to all parishioners. We are hopeful that the meeting will be held at the Village Hall – if this is not possible, details of any changes will be posted a few days beforehand on our website [www.newbuckenhampc.info](http://www.newbuckenhampc.info) or on our noticeboard on the Green. Future Parish Council meetings will take place on 13th October, 10th November and 8th December.

*Karen Hobley - Parish Council Chair*

## Summary of Draft Minutes July 2020.

1. Apologies received and accepted from Cllr Bingham.
2. June Minutes approved with minor adjustment 'Moat Lane for Marsh Lane'.
3. Matters Arising
  - a) Resurfacing Marsh Lane scheduled for 2021.
  - b) County Broadband online seminar for villagers on 22nd July. Council to await developments.
4. Public Participation
  - a) Parishioner Comments

Violet Highton reported little use of the Community Car Scheme due to Covid 19 restrictions.
  - b) Parish Cllr Reports

Cllr Highton asked that concerns regarding indiscriminate spraying of herbicide on a section of Chapel Hill be raised with Cllr Askew.
  - c) Query as to progress of mobile phone mast in Old Buckenham.

*Continued on page 11...*



# St Mary's Residential Care Home

Market Place, New Buckenham, Norfolk, NR16 2AN

**tel: 01953 860 956 email: [manager@stmaryshome.co.uk](mailto:manager@stmaryshome.co.uk)**

A home from home, at St Mary's, we offer 24-hour person-centered care within safe, warm and friendly surroundings with an emphasis on providing a high quality of life.

- Care services offered include day care, respite, dementia, palliative, end of life and long/short-term residential care
- Day care services include hot meals & refreshments
- Freshly prepared meals, including catering for special diets - Consistently received highest Food Hygiene rating of 5 star
- Single occupancy rooms, passenger lift, two enclosed gardens, Wi-Fi, nurse call facilities, wheelchair friendly wet room and a hair salon
- Residents enjoy engaging and stimulating activities
- Top ratings by residents, family & friends and healthcare professionals
- Social Services and self-funding residents welcome
- Self-funding residents offered very competitive rates
- Care package tailor-made to meet your requirements
- No-obligation free trial day offered

**For further information or for a fact-finding visit, please contact  
the manager on 01953 860 956 or email  
[manager@stmaryshome.co.uk](mailto:manager@stmaryshome.co.uk)**

Registered and licensed to provide services by the Care Quality Commission (CQC)

**- Under new management -**

***When you need some help  
around the house....***



***...call the Cavalry***

- **Domestic cleaning**
- **Ironing / laundry – collection and delivery service**
- **Dog walking / feeding – daily home pet service whilst you are on holiday or at work**
- **Errands – any form of shopping, collection or delivery**

**Whatever your task,  
we will endeavour to tackle it  
to your satisfaction**

There are occasions when everyone could do with a little help around the house – in times of illness, disability or simply from pressure of a busy lifestyle.

Whether you need assistance on a regular basis or just occasional help, Household Cavalry is here to provide a dependable, diligent and trustworthy service.

Our carefully selected, fully vetted and insured team can tackle a whole range of household tasks.

Our fee structure is flexible to accommodate your needs, so if you would like more information about our services or a quotation, **please contact Sally on:**

**01953 488635**

**07900 894902**

**Household Cavalry Limited**

**Slate Plantation Barn, Home Farm Lane,  
Merton, Thetford, Norfolk IP25 6QS  
sgt.major@householdcavalryltd.co.uk**

***Buckenham House  
Holistic & Beauty Therapies***

Facials  
Reflexology  
Indian Head  
Massage ~ Swedish, Hot Stone, Lava Shell  
Pregnancy Massage  
Hopi Ear Candling  
Manicure & Pedicure  
Eyelash & Brow Tinting  
Waxing

Using Eve Taylor, OPI, OPI Pro Spa, OPI Gelcolour, Orly,  
Orly GelFX, Songbird and GiGi Wax Products

Beauty & Holistic Therapist NVQ3 and fully insured.  
Member of the Association of Reflexologists

To book an appointment or for enquiries  
Contact Jane on  
**01953 860013**

OR



New Buckenham Rd, Old Buckenham, NR17 1PW

**WOMACK**  
**BUILDING SUPPLIES LTD**



**01953 788077**

**07770 388314**

**07796 638877**

**info@womackbuildingsupplies.co.uk**

**Architectural Salvage**

## 5. Financial Matters

- a) Financial Report for June was noted.
- b) Payments for July were approved.
- c) Annual Internal Report 2019/20 received and noted.
- d) Annual Governance Statement 2019/20 approved.
- e) Accounting Statements 2019/20 approved.
- f) Annual Return 2019/20 signed by Chairman.
- g) Accounts 2019/20 adopted.

## 6. Community Project Fund Grant Application

Council approved the application received from NB Junior Football Club for £588 for new goalposts and nets.

## 7. Planning

- a) The Haven, Rosemary Lane, resubmission following approval – no objection.
- b) The Coach House, Boosey's Walk, resubmission – no objection.
- c) 13 St Martin's Gardens, amendment, raising the roof and new dormer window – no objection.

## 8. New Buckenham Castle – Grazing of Horses

Following previous discussions, there had been correspondence from the landowner. Some uncertainty whether English Heritage or Breckland Council had jurisdiction. Also noted that the area was within Old Buckenham parish. Clerk to write to English Heritage for clarification.

*Continued overleaf...*

## 9. Parking at the Cemetery

Following discussion with the undertakers, it appears that they need physical access for their mechanical digger at that end of the cemetery, so it was decided not to close off the area, but to leave it open to cemetery users only.

## 10. Noticeboard

Final version available shortly.

## 11. Amenities

Clerk to write to allotment holders to see if they wished to renew their leases in order to see if there will be any vacant for those on the waiting list.

## 12. Next Meeting

This will be on 8th September with a possibility it could be held at the Village Hall instead of on Zoom, details to follow.

*Mary Dowson on behalf of the Parish Council*

# Parish News Online

It is possible to access an online version of *Parish News* at <http://newbuckenhams.net/index.php/parish-news>. If you find yourself with time to fill, you can download back-issues of the magazine from 2017 onwards!

It is also possible to receive your copy of *Parish News* by email, and if you would like to do this you can sign up for our mailing list here: <http://eepurl.com/dhB-1P>.

*Parish News Committee*

# Climate Action Now

We want to say thank you! The Climate Action Now (CAN) group would like to thank the Parish Council and their Community Fund for generously sponsoring our next small foray into tree planting in the village.

I am sure you have all received the flier about our 'Adopt a Tree' event in the autumn. The Community Fund is providing the trees, plaques and necessary equipment for planting, which has enabled this event to happen. All we need is eight willing families to adopt a tree to care for and nurture them.

We would also like to wholeheartedly thank Phil Anderson for his knowledgeable advice and generous support to CAN. Thank you Phil and the Parish Council!

*The CAN Team*

## William Barber's Almshouse Charity

The William Barber's Almshouse Charity continues to maintain and improve the fabric of the almshouses to ensure the residents are comfortable. Last year, we renewed all the windows to bring them up to a better standard.

There has been a change of personnel among the Trustees, who now comprise: Jon Frith (Chair), Gordon Chase, Mary Dowson, Pauline Dynes, Gill Goodwin, Nicola King and Felicity Thomas. We are expertly supported by our clerk and treasurer, Jenny Shorter.

We are always happy to answer any queries you may have about these historic buildings and the work of the Trustees. A full history of the William Barber's Almshouse Charity and the almshouses, compiled by Charles Oxley, can be found on the village website.

*The Trustees*

## **Tacolneston Osteopaths**

Yvonne Ayliffe D.O.FSCCO BSSCMD MICrA  
Chloe Savage M.Ost DPO Chanté Batson M.Ost  
9 The Fields, Tacolneston

**Tel: 01953 789629**

**07770652839**

[reception@norfolkost.co.uk](mailto:reception@norfolkost.co.uk)



- Experienced osteopath qualified for 38 years
- Gentle Osteopathy for the elderly
- Cranial Osteopathy
- Headaches and migraine, acute necks
- Sporting injuries, accidents & whiplash
- For muscular and joint problems
- Repetitive strain injuries at work or at home
- Pre- & post- pregnancy for mother and baby

**OSTEOPATHY FOR ALL**

**Also at Aylsham 01263 732028**

**Breckland Brush**

***Chimney Sweep  
& Stove Installation***



**NATIONAL ASSOC. OF CHIMNEY SWEEPS**

**Qualified Experienced Professional**

[sweep@brecklandbrush.co.uk](mailto:sweep@brecklandbrush.co.uk)

**01953 881579 / 07966 298777**

## **R.BUNN ELECTRICAL**

**Richard Bunn**

*LED Lighting - Indoor/Outdoor Lighting*

*Extensions - Rewires - New Builds*

*Additional Lights & Sockets*

*Mains Upgrades*

**07899936057**

**Competitive Hourly Rates**

**[R.BunnElectrical@Gmail.com](mailto:R.BunnElectrical@Gmail.com)**

**No V.A.T**

**Part P Approved**

## Norfolk Churches Trust Cycle Ride

This will take place on Saturday 12th September. Last year, we had a rider for the first time in several years, who raised amazing sums of money which were split between the Trust and St Martin's. It would be splendid if we had others this year, too. The money raised helps with the upkeep of our lovely Norfolk churches and we have received grants from the NCT at St Martin's. I do not think I can leave the sponsor forms, etc., in the church at present, so they are here at Castle House for the moment.

We shall have a table set up at 9:30am on Saturday 12th September and someone to see any riders from New Buckenham on their way, although we cannot have someone there all day. So, on your bikes and have lots of wonderful exercise whilst raising a fortune for this excellent cause!

*Helen Pearson (860251)*

### Kings Stores

We offer a wide range of services and supplies including groceries, fresh meat and veg, newspapers, lottery, dry cleaners and lots more ...

**Opening Hours: Monday – Saturday 7 am to 7 pm**  
**Sunday 8 am – 12.00 pm**

Post Office: Wednesday 9.30 am – 12.00 pm

Why not call in and give us a try?

Look out for our special offers!

01953 860264

# New Buckenham Players

We are sorry to announce that this year's Christmas play/pantomime will not be taking place due to the Covid-19 outbreak.

Although the Hall is now open, it is the view of the Committee that it is not yet safe enough to allow sufficient seating for those that would wish to attend a performance. The safety of our cast, crew and audience will always be our top priority.

Hopefully, we will be back next year to perform the summer play and, of course, our Christmas play. So, to all those budding actors – we cannot wait to start rehearsing in the spring! To the children who have always been the stars in our Christmas production, we hope you will all be back next September to start rehearsing! We look forward to seeing as many of you as we can and, to our supporting audience, we hope to see you all for our Summer production!

We hope that you all keep safe and well, and hope to see you soon.

*Sally Elvin*

*Vice Chair on behalf of the Committee*



# Darren Rush

**BUILDER & DECORATOR**

All types of building work undertaken including:-

- Specialising in Older Properties
- Extensions / Loft Conversions
- Roofing
- Property Maintenance
- Landscape Gardening

**MOBILE: 07778 602 026**

**HOME: 01953 860 693**



## Slimming World with Amy

Feel your best in 2019 where a world of support and friendship awaits!

**Monday** – New Buckenham Village Hall  
5.30 & 7.30pm

**Thursday** – Attleborough Scout Hut  
(near the train station)  
9.30am

Pop along or contact Amy  
07590 806046



# SMART GARDENS

**Lawns and Borders Maintained**

**Spring and Autumn Pruning**

**Hedges Trimmed**

**For free quote ring Vicky or Alan**

**01953 860451 / vickyal0712@gmail.com**

# Books! Books! Books!

By the time you read this, and all being well, we should have had the first coffeemates coffee morning at church, and if you've missed the Summer Fete book stall this year, you may have found some compensation in the huge array of books on sale.

As I write, the books are spilling all over the church, and we are amazed and grateful for your generous donations, which will help with essential fundraising as well as providing a service to the village. We'll assess our stock after the second coffee morning on 26th September. It may be that we will have a massive sale of non-fiction books and biographies and concentrate on paperback fiction, as this is the most popular section. Watch this space!

Meanwhile, please keep them coming, but could I tentatively suggest that there isn't a huge market for Rough Guides from your gap year back in the 1980s and that Jamie Oliver sells better when not decorated with gravy! And, although we're a broad-minded lot (we've sold *50 Shades of Grey* several times over), this may not be the best outlet for serious erotica and witchcraft! (Yes, we have...)

Seriously, thank you for all your donations and for all your purchases. Keep bringing and buying!

*Susan Jowett (860929) and Jane Ling*



Outstanding advice  
and legal expertise for  
the region

### How can we help?

- Agriculture
- Conveyancing
- Employment
- Family
- Wills, Tax & Probate
- Tenancy Management
- Litigation & Disputes
- Corporate & Commercial

Attleborough | Aylsham | Dereham | Diss | Norwich | Watton | Wymondham

Lexcel  
ACCREDITED  
SOLICITORS

[www.spire solicitors.co.uk](http://www.spire solicitors.co.uk)



# Rosedale FUNERAL HOME

Providing the very best care.  
We have established our  
reputation by providing  
an exceptional  
service at an  
affordable cost.



- BEREAVEMENT SUPPORT GROUP
- ADVICE ON FUNERAL GRANTS

A family  
business –  
we believe it  
makes a  
difference



Yard House  
High Street  
Attleborough  
NR17 2EH

24 HOUR TEL  
**01953  
452538**

C.A. Rush Ltd., t/a Mill House Garage

# MILL HOUSE GARAGE

THE COMMON, NEW BUCKENHAM

Tel: 01953 860 572-Fax: 01953 860 090

E-Mail: [clive.rush@btconnect.com](mailto:clive.rush@btconnect.com)

## EVERYTHING FOR THE MOTORIST...

M.O.T Station inc. Diesel and Catalyst cars

Full Diagnostic Facilities

Up-to-date E.C.U - Engine Management Scanner

## Servicing

Exhausts, Batteries, Welding, Bodywork. Fully Equipped Tyre Bay

Insurance and Accident Repairs

**Breakdown Service**

## AIR CONDITIONING SPECIALISTS

All makes of tyres at very low prices

**WE WILL COLLECT AND RE-DELIVER YOUR CAR**

## John Underwood Antiquarian Books

from 16<sup>th</sup> to 19<sup>th</sup> centuries

**Newspapers from 17<sup>th</sup> century**

**Modern First Editions**

**Children's Books**

**from Pooh to Potter**

All the above and much more!

Book Room and Bindery open most  
days .. please check before  
visiting.

**BOOKS WANTED**

**TO PURCHASE**

**BOOKBINDING CLASSES**

Plum Tree Farm, Uppate Street,

Carleton Rode Tel: 01953 860746

[www.johnunderwoodbooks.com](http://www.johnunderwoodbooks.com)

## SWEEPERS

Chimney and Flue Cleaning Services

FOR A PROFESSIONAL SWEEP

Call Marty on:

**01953 888544**  
**07826 595385**



Email: [marty.the.sweep@gmail.com](mailto:marty.the.sweep@gmail.com)

EVENING AND WEEKEND SERVICE AVAILABLE

# New Buckenham in Lockdown

We've been sent some lovely lockdown photos, but could do with more! Please do send us yours – and it's the memories that are important, not the quality of the photos!

Out and about, the garden or indoors, in 'distanced' company or alone, pets and landscapes. These all make good subjects and will be welcomed to the collection. Has anyone taken some photos of work or using Zoom?

We'll put the photos online later this year and hope to display some of them as prints at next year's Photoshow – fingers crossed that we can hold that event!

Please send your photos as an email attachment to [photoshow@newbuckenham.net](mailto:photoshow@newbuckenham.net). If you run into technical problems please let me know.

*Charles Oxley, New Buckenham Arts*

*(860708 / [photoshow@newbuckenham.net](mailto:photoshow@newbuckenham.net))*

St Martin's Church — September			
Sunday 6th	11:00am	Parish Eucharist	Trinity 6
Sunday 13th	6:30pm	Evensong	Trinity 7
Sunday 20th	11:00am	Morning Prayer	Trinity 8
Sunday 27th	11:00am	Morning Prayer	Trinity 9

# Horse Chestnut on the Market Place

Following consultations with our resident tree expert Phil Anderson, he confirms that the Horse Chestnut on the Green nearest to St Mary's is beyond help and needs to come down before it falls down. We will obtain any necessary permissions, cut it down and remove the stump. This will create space for two new trees to be planted!

It is very sad to be losing trees planted by Dr Hamerton all those years ago, but the other Horse Chestnut, despite the leaf discolouration, is still doing well and should be with us for a good few years yet.

You may also have noticed that we have not cut the grass under the limes on Market Green. This is in preparation for next year, when we hope that the area will be seeded with meadow flowers, adding some colour and variation to what is/was an unused area. This has been requested by villagers and I am sorry we did not think of it before! It will require some management and will not come to full fruition for a couple of years.

Any comments regarding either of the above, please contact me on 860191.

*Jimpy Casson*

*Chairman, High Bailiff's Trust*



# New Buckenham Parish Council

- Chair:** Karen Hobley  
(01953 860529 / [karenhobley@hotmail.com](mailto:karenhobley@hotmail.com))
- Vice-Chair:** Andrew Bingham  
(01953 861150 / [andrew.bingham100@gmail.com](mailto:andrew.bingham100@gmail.com))
- Councillors:** Don Crossman (01953 861246)  
Mary Dowson (01953 860320)  
Steve Highton (01953 860499)  
Mary Manning (01953 861242)  
Paul Martin (01953 861117)
- Clerk:** Trevor Wenman  
(01379 641423 / [parishclerk@newbuckenham.net](mailto:parishclerk@newbuckenham.net))

The Parish Council meets at 7:30pm on the second Tuesday of every month. At present, the meetings are being held online via Zoom. Further information about how to join these meetings, and the Parish Council more generally, can be found on our notice board on the Village Green or on our website [www.newbuckenhampc.info](http://www.newbuckenhampc.info).

Contributions for the October 2020 issue of *New Buckenham Parish News* should be submitted by 6:00pm on Friday 18th September 2020 to Linda Bryan, Pine Cottage, Marsh Lane (861107), Michael Boswell, Peel House, Chapel Street (860015), Richard Hoggett, 9 Church Street (860136) or by email to [editor@newbucknews.co.uk](mailto:editor@newbucknews.co.uk).