

New Buckenham Parish News

New Buckenham Neighbourhood Plan

*is now out
for consultation
by Breckland Council*

See details inside or visit
www.np4nb.online

August 2021

Art Class

coming soon



Interested?

The class is due to start
1.30pm - 4pm
Wednesday
15th September

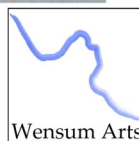
Phone or Text

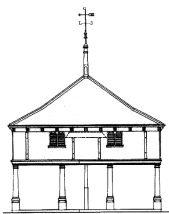
Margaret Ward at Lace Cottage,
New Buckenham
01953861362

or

John on
07788776351
to register your interest

Drawing & Painting at New Buckenham Village Hall,
Moat Lane, New Buckenham. NR16 2AU





New Buckenham Parish News

August 2021

Every month, *Parish News* is distributed free to every house in the village, and we are very grateful to the Parish Council and all those villagers who have helped to cover our production costs during the past year. We are also grateful to those individuals and organisations who sponsor issues of the magazine, and also those businesses who choose to advertise with us.

This month's issue is sponsored by the New Buckenham Junior Football Club in memory of David Seville, who passed away recently. The Club's tribute can be found on page 8, and we also offer our condolences to his friends and family.

If you would be interested in sponsoring an issue of *Parish News* or advertising in the magazine, please contact Mary Dowson on 01953 860320 or mdowson@btinternet.com.

Parish News Committee

New Buckenham Common

...it's not so common!

The first of the Walk-and-Talk events with the Norfolk Wildlife Trust (who own and manage the Common) took place in June. This one was 'Conservation and Wildlife' led by Izzy Williamson, Senior Reserves Assistant, Brecks. If you weren't there you missed a treat. Information upload: NB Common is 49.4 acres (20 hectares) and became an SSSI in 1984. The citation says it is 'a large area of unimproved grassland'. That sounds remarkably unimpressive unless you know that unimproved grassland is incredibly rare. It's land that's never been ploughed, reseeded or heavily fertilised. An estimated 97% of unimproved grassland was lost between 1932 and 1984.

The talk revealed another fascinating fact: this type of land is wonderful for wild flowers, not because it's rich in nutrients, but for the opposite reason. The widest variety of British wildflowers prefer poorer soil. The result is lots of flowers, lots of insects and lots of wildlife. Hence the orchids. It seems all wrong, especially in a world where we are constantly exhorted to buy fertilisers and plant foods.

And, yes, we saw orchids: Pyramidal, Green-winged and Bee orchids, which look for all the world as if bees are on them, encouraging other bees to arrive. Orchids need particular fungi in the ground to give them carbohydrates and in return the mycelium gets moisture and organic matter. A natural symbiosis. Consequently orchids grow intermittently - sometimes only every 7 years. Bee orchids have turned up again this year on Cuffer Lane after a long absence.

All this, of course, is why NWT are to be seen controlling hawthorn, etc., and clearing leaf fall which otherwise would enrich the soil and kill off the wildflowers. Who knew?!

The Norfolk Wildlife Trust can be contacted on 01603 625540 or via info@norfolkwildlifetrust.org.uk.

Janet Trewin



NEW BUCKENHAM CLIMATE ACTION NOW!
INVITES YOU TO

NEW BUCKENHAM GREAT BIG GREEN AFTERNOON

SEPTEMBER 18, 2021 | BETWEEN 2:00 & 4:00 | ON THE VILLAGE GREEN

GREEN ACTIVITIES FOR THE CHILDREN, STALL & CAKES



NEW BUCKENHAM CLIMATE ACTION NOW!

invites you to save the date for

Pond Clearance

OCTOBER 4TH & 5TH, 2021

BRING BOOTS & RAKES | NWT WILL PROVIDE VERY HEAVY RAKES

MORE DETAILS TO FOLLOW...



Art and Soul

Put art back in your heart! Covid chaos has had a terrible effect on many group activities and one of them is art classes. Here in New Buckenham we're going to change all that – with your help.

Professional artist, John Madeley, will start up classes in New Buckenham Village Hall from mid-September – always assuming enough of us sign up. John (BA (Hons) MA PGCE) graduated from Norwich Art School (now Norwich University of the Arts) in 2004 and has a welter of teaching qualifications, too. He has fabulous experience at teaching all levels of ability, in all media and genres.

The class is planned to run from 1:30pm to 4pm from Wednesday 15th September. The classes are scheduled for a whole year. You need to sign up for eight weeks initially so that the Village Hall can ensure the room booking is secure. Each session is 2 ½ hours. Refreshments are available for small fee. The cost is £10 per session, so £80 for the first eight lessons. To ensure a slot book now.

John's website is <https://wensumarts.co.uk/> or you can contact him on 07788 776351. To chat with someone locally, speak to Margaret Ward on 01953 861362.

Margaret Ward

Please don't kill wasps

Yes, they are a nuisance, especially if you are eating *al fresco*! Wasps are however very garden friendly as pollinators and for the control of pests such as aphids. A trap such as a shallow dish of jam placed away from your table may attract them away from you and your guests.

Jo Boswell

Events at New Buckenham Common



Annual Orchid Count

SATURDAY 22 MAY, 2PM

Assist with our vital monitoring work by helping to count the beautiful green-winged orchids.

Conservation & Wildlife Walk

WEDNESDAY 23 JUNE, 10AM-12NOON

Join Senior Reserves Assistant Izzy for a guided walk around the common. Find out how NWT manage the common and the basic conservation principals that influence our decisions.

Walking through Common History

TUESDAY 6 JULY, 6.30-8.30PM

Join Tom Williamson, Professor of Landscape History at UEA, for a guided walk around the common. Learn about the history of commons in general and how the common at New Buckenham was used in the past.

Bee Walk

THURSDAY 8 JULY, 11AM-12.30PM

Join NWT's Rebecca Evans for an introduction to bees. Discover which bee species can be found on the common and learn more about them.

Ragwort Pulling Work Party

FRIDAY 16 JULY, 10AM-3PM

Help NWT staff and regular volunteers to keep on top of this controlled plant by reducing its numbers. Please bring a packed lunch, drink and sun hat.

Bat Walk

THURSDAY 19 AUGUST, 7.30PM

Join Senior Reserves Assistant Izzy and Lindsey Bilston of Norwich Bat Group to discover more about bats. Learn how to use a bat detector to hear bats as they use sound to hunt for food. All ages welcome.

All activities are free, but booking is essential. To book phone 01603 625540 or email info@norfolkwildlifetrust.org.uk. All events start from the small car park near the common play area.



Images: Richard Osbourne, Charles Oxley

Saving **Norfolk's Wildlife** for the Future

David Seville

It was with great sadness that members of New Buckenham Junior Football Club learned of the death of David Seville, who was a founder and long-term Trustee of the Junior Club.

David's vision, energy and love of football led him to establish a Junior Football Club in the village, which I am estimating was almost 20 years ago and, until his recent illness, he was a regular spectator and supporter who would visit the field to watch the young footballers and their families enjoying the games. He was a committed Trustee who took great interest in making sure the Club was adhering to all of the demands made by the Charity Commission and F.A.

The Junior Football Club moved away from the village for many years, but David was very supportive in encouraging the club to return to their spiritual home on the Village Hall Field. It is upon the firm foundations laid down by David that the Junior Club is thriving, has Charter status with the F.A. and has over 70 youngsters aged between 5 and 15 enjoying football. Next season it is likely that the Club will have 6 teams playing competitive matches and it is a legacy of his vision and commitment over many years.

David will be sadly missed and we extend our deepest sympathies to Shirley Loveday, his dearly loved partner and friend of many years.

John Hobley (President New Buckenham Junior Football Club)

Kings Stores

We offer a wide range of services and supplies including groceries, fresh meat and veg, newspapers, lottery, dry cleaners and lots more ...

**Opening Hours: Monday – Saturday 7 am to 6 pm
Sunday 9 am – 12.00 pm**

Post Office: Wednesday 10.30 am – 12.00 pm

Why not call in and give us a try?

Look out for our special offers!

01953 860264

***Breckland Brush
Chimney Sweep
& Stove Installation***



NATIONAL ASSOC. OF CHIMNEY SWEEPS

Qualified Experienced Professional

sweep@brecklandbrush.co.uk

01953 881579 / 07966 298777

Mrs Samantha McCluskey

BSc(hons) Pod Med, PGDip, MCPod, HCPC

Podiatrist/ Chiropodist

14 years' experience in the NHS

**Professional assessment and
treatment in your own home**

Tel: 07905 724408



New Buckenham Bats are flying high!

The unique Norfolk Bat Survey run by BTO has once again been crippled by Covid. However, here in New Buckenham, thanks to support from Batman Superior, Dr Stuart Newson (who invented the concept and designed the most accurate technology available globally), we have been able to carry on.

Already more than 20 overnight readings have been completed. They confirm that of the 18 UK bat species, at least 11 are in the village. For the first time we have the Whiskered Bat and there is a possibility that a 12th species, Brandt's Bat, is here but we can only be sure with more readings. All UK bats are protected by law since their numbers are so fragile. However, four of the rarest bats in the entire country, as designated by the 2020 International Union for the Conservation of Nature 'red list', are here. Those are the Barbastelle and the Serotine, both categorised as 'vulnerable', Leisler's bat and Nathusius' Pipistrelle, categorised as 'near threatened'. As you might expect these lofty and eminent residents are to be found hanging out in the castle—where else? — and on the common, the Village Green, around the church and winging it up and down Cuffer Lane, making best use of the hedges and verges as echolocators and to provide insects.

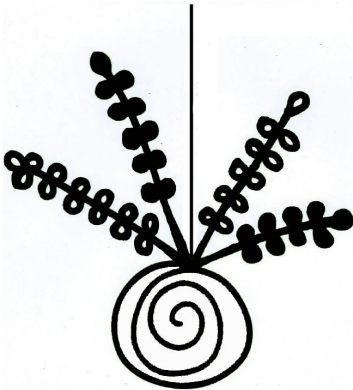
Advice on how to protect bat species is to be found here:
<https://www.bats.org.uk/advice/gardening-for-bats>.

To have recorded this number of species this summer is impressive, not least because the weather has been challenging for bats. Cold, wet nights are not what a bat wants! The recordings will continue to give us a better idea of potential roosts and flight patterns and, who knows, there may be more species yet!

Janet Trewin

KOKEDAMA

THE JOY OF PLANTS



YOUR LOCAL SHOP FOR
PLANTS, GIFTS AND HOME
DECORATION IN THE HEART
OF NEW BUCKENHAM

SPECIALISING IN UNIQUE PLANT
CREATIONS IN RECYCLED
CONTAINERS AS WELL AS
A FANTASTIC SELECTION OF
HOUSE PLANTS & GIFTS WITH
A DIFFERENCE.

3carynlouis@gmail.com

CALL CARYN OR TONY ON

01953 860 512 OR

07940377998

OPEN TUESDAY- SATURDAY 11-5PM

BAKEHOUSE COTTAGE, KING ST, NEW BUCKENHAM, NR16 2AF



Just Ask Home Improvements

Kitchens, Bathrooms, Plastering, Tiling & Small Extensions

For All Your Property Requirements

Free No Obligation Quotes

01953 861476 or 07584 283624

email: justaskpaul1@yahoo.co.uk

f @justaskpaul

Just Ask Paul



St Mary's Residential Care Home

Market Place, New Buckenham, Norfolk, NR16 2AN

tel: 01953 860 956 email: manager@stmaryshome.co.uk

A home from home, at St Mary's, we offer 24-hour person-centered care within safe, warm and friendly surroundings with an emphasis on providing a high quality of life.

- Care services offered include day care, respite, dementia, palliative, end of life and long/short-term residential care
- Day care services include hot meals & refreshments
- Freshly prepared meals, including catering for special diets - Consistently received highest Food Hygiene rating of 5 star
- Single occupancy rooms, passenger lift, two enclosed gardens, Wi-Fi, nurse call facilities, wheelchair friendly wet room and a hair salon
- Residents enjoy engaging and stimulating activities
- Top ratings by residents, family & friends and healthcare professionals
- Social Services and self-funding residents welcome
- Self-funding residents offered very competitive rates
- Care package tailor-made to meet your requirements
- No-obligation free trial day offered

**For further information or for a fact-finding visit, please contact
the manager on 01953 860 956 or email
manager@stmaryshome.co.uk**

Registered and licensed to provide services by the Care Quality Commission (CQC)

- Under new management -

Neighbourhood Plan

Our village's Neighbourhood Plan is now open for public consultation. Organised by Breckland Council, the consultation ends on 9th September. The draft Plan we sent to all households 18 months ago has been revised following the excellent response from residents and other interested parties. This is the final version of the Plan, but there's still time to send your comments to Breckland. After the consultation ends, the Plan is sent for independent examination to ensure everything has been done by the rules. The Plan is available to see at our dedicated website: www.np4nb.online

We haven't printed copies for each household this time because it's too expensive, but we do have a very limited number of copies to lend out if someone has no internet access. Please contact Mary Manning or Charles Oxley.

On our website you can also find the Consultation Statement. This describes all of the open days, surveys and focus groups about the Plan. Every comment we received about the draft version is set out in full, together with our response.

The Plan deals with planning issues and policies of course, but it's also an appraisal of the village and its life that we hope you find interesting.

Karen Hobley, New Buckenham Parish Council

Charles Oxley, Neighbourhood Plan working party

Pimp your Bike/Walking Boots/Car or even your Horse!

Did you know that there are over 600 churches and chapels, of all denominations, in Norfolk? Every year the Norfolk Churches Trust organises a sponsored bike ride to raise funds for these historic buildings. Since its foundation in 1976, the Trust has made grants totalling over £6m towards repairs and restorations. Participants seek sponsorship to visit as many churches or chapels – including some interesting ruined churches – as they can in a day. Last year, despite the restrictions, the Bike Ride raised an unprecedented £174,382, about £80,000 more than 2019!

This year the event is called ‘Bike, Walk, Drive... in the Norfolk Countryside’ and is taking place on Saturday 11th September. You choose your route, visit as many churches or chapels as you want – you could even go by horse! The money raised is shared between the Norfolk Churches Trust and the building the participant nominates.

So, if you would like to pump those tyres, or clean off your walking boots, or get behind the wheel or saddle your horse and raise some funds for St Martin’s church, please do collect a sponsorship form from the church. The form gives you all the information you need. I know villagers have participated in the past and had a fun time! If you do take part and nominate St Martin’s – thank you!

Or if it all feels like too much hard work, just go to www.justgiving.com/norfolkchurchestrust and make a donation! You may have no religious affiliation at all, but these buildings are an important part of our heritage and need all the help they can get.

Louise Casson, Churchwarden for St Martin’s

Turner Funerals

SERVING TOWN & COUNTRY

01842 761333 (24 hr)



a fresh approach

Andy Free

Dip FD



Independent family funeral director

'Quietly helping and guiding bereaved families for many years now, our family team offer guidance and direction at a time most needed'

Pre-paid Funeral Plans and Memorialisation Available

Attleborough 01953 452455

Wymondham 01953 605222

attleborough@andyfree.com

wymondham@andyfree.com

24 hour service

Coffeemates! are Back!

We're delighted that after such a long break we can once again hold a Coffeemates! morning — look out for the posters over the coming months and save the dates! Our first date is Saturday 14th August and we will be raising money for the Stroke Association, a very prescient charity for our community. Please do join us at 10:30am for a cup of something, a piece of cake and the opportunity to simply have a chat. There will be the ubiquitous raffle and we hope that Flamingo Paperie will also be there. Have a chat, have a coffee, have a browse of the books — it'll feel just like old times... If the weather is kind to us, we'll be able to sit outside! If you're concerned about gathering together, those of us serving will wear masks, we will have hand sanitiser and will keep all the surfaces clean as you come and go.

All being well, on Saturday 11th September we will be raising money for Leeway, support for whom has never been so important, given the terrible increase in domestic violence over the last 18 months. On Saturday 9th October we will raise funds for Toilet Twinning. Never heard of them? They are charity who 'twin your loo with an impoverished family's household latrine, in a country of your choosing'. As they say, 'Toilet Twinning enables families living in poverty to have lifesaving loos'.

So do join us! The chatter will be loud, the coffee warm, the church not so much, and the cakes fresh and yummy!

Louise Casson

New Buckenham Parish Council

The Parish Council does not meet in August, but if any issues arise please feel free to contact me using the details below. Our next meeting will take place on Tuesday 14th September at 7:30pm in the Large Meeting Room at the Village Hall. Remaining dates for 2021 are 12th October, 9th November and 14th December.

Many thanks for the very positive response to the information regarding dogs around the Play Area and Cricket Pitch which featured in last month's Parish News. I now need to ask for your support when walking anywhere near livestock. At our last meeting, it was disappointing and somewhat distressing to hear from a local farmer about the problems he encounters with dog walkers. Popular farmland and meadow walks around the parish include the common, around the castle, south of Marsh Lane and routes to Old Buckenham. The majority of dog owners are extremely responsible but could everyone please look after their dogs when enjoying public footpaths on farmland and the common?

The main areas of concern are:

- **Fences:** Walkers are asked to avoid damage to fences or pushing over temporary electric fence supports. Please use crossing points provided or use spring-retained access points where fitted. Close gates securely at all times.
- **Leads:** Dogs should be kept on leads on farmland, and not allowed to run loose fouling randomly. Dog mess can cause a pregnant cow to abort, so please remember to respect the farmers and their valuable livestock.
- **Injury:** Cattle are large and heavy, will damage fences and may injure themselves if chased by loose dogs. Loose cattle wander amongst crops causing more damage as well as creating unnecessary work and expense.

Continued on page 19...

Darren Rush

BUILDER & DECORATOR

All types of building work undertaken including:-

- Specialising in Older Properties
- Extensions / Loft Conversions
- Roofing
- Property Maintenance
- Landscape Gardening

MOBILE: 07778 602 026

HOME: 01953 860 693

SMART GARDENS

**Lawns & Borders
Maintained**

Spring & Autumn Pruning

Hedges Trimmed

For a free quote ring

Vicky or Alan

01953 860451

vickyal0712@gmail.com

HEALTHY FOOT CARE

Routine Foot and Nail Treatment in the Comfort of your own Home



Foot Health Practitioner
Dip FH MCFHP MAFHP
Please Call Lou
07500 516276

Fungal Nail Infections
Corns and Callus Removal
Ingrown Toenail Treatment
Footcare for Diabetic Patients
Reduction of Thickened Nails
Treatment for Cracked Heels
Verruca Treatment
Nail Trimming

Fully insured

Tacolneston Osteopaths

Yvonne Ayliffe D.O.FSCCO BSSCMD MICrA

Chanté Batson M.Ost

9 The Fields, Tacolneston

Tel: 01953 789629

07770652839

reception@norfolkost.co.uk

- Experienced osteopath qualified for 39 years
 - Gentle Osteopathy for the elderly
 - Cranial Osteopathy
 - Headaches and migraine, acute necks
 - Sporting injuries, accidents & whiplash
 - For muscular and joint problems
 - Repetitive strain injuries at work or at home
 - Pre- & post- pregnancy for mother and baby
- OSTEOPATHY FOR ALL**
Also at Aylsham 01263 732028



A loose dog that alarms livestock creates a danger for dogs and walkers so control your dog to help keep safe in the countryside.

- **Paths:** Walkers, please stick to marked routes and designated Public Footpaths.

Farmland is a living workplace, e.g. the cattle on the Common are continuing an ancient village tradition and cattle and sheep are the farmer's livelihood. Please avoid worrying livestock while walking.

Thank you for your co-operation with this. I should finish by saying that a number of Parish Councillors are dog owners and we are all dog lovers. This and our previous article are not directed at the majority of dog owners who are all extremely responsible. We are simply trying to ensure that everyone can enjoy their work and leisure time around the parish.

Karen Hobley – Parish Council Chair
01953 860529 / karenhobley@hotmail.com

Summary of Draft Minutes July 2021

1. Minutes of the Parish Council meeting 8th June confirmed as correct.
2. Matters Arising
 - a) Clerk is waiting for details of Cricket Club's safeguarding policies.
 - b) Cllr Highton would secure repairs of the litter bins on the Market Place by September.
 - c) Churchyard wall – Clerk will contact neighbouring landlord.
 - d) Clerk will contact Breckland to release S106 funding and then order the Bee Maze equipment for the Play Area.
 - e) VAT reclaims for 2019/20 and 2020/21 have been submitted.

Continued overleaf...

- f) Clerk circulated a model Communications Policy which was unsuitable. Cllrs Manning and Nettleton agreed to formulate a simpler policy more suitable for Council needs.
- g) Two overgrown hedges have been cut back.
- h) Cllr Nettleton to draft a letter to County Broadband.
- i) A site meeting with Norfolk Wildlife Trust had taken place concerning the moat area and pond near the cricket pitch. NWT are planning management of the pond starting on October 4th following the discovery of Great Crested Newts in the area. Local volunteers to help with the work will be welcome.

3. Public Participation

- a) Parish Councillors
 - i) The Chair asked whether the PC should have its own Facebook page to help with communication of information.
 - ii) Cllr Bingham praised the work done on the hedge cutting on Castle Hill Road.
 - iii) Cllr Manning raised the issue of HGVs mistakenly driving up Boosey's Walk as damage had been caused to an old wall on the tight corner.
- b) Public Participation
 - i) A local landowner expressed great concern about irresponsible dog owners who allow unleashed dogs across fields with livestock. This has caused sheep/cows to abort and he stated landowners are entitled to take measures, including shooting dogs, to protect them.
 - ii) Gerry Walsh reported six drivers had completed their checks and DBS forms to be submitted to CBR solutions for the Community Car Scheme.

4. Financial Matters

- a) Financial report for month ending 30th June was noted.

Continued on page 22...



Outstanding advice
and legal expertise for
the region

How can we help?

- Agriculture
- Conveyancing
- Employment
- Family
- Wills, Tax & Probate
- Tenancy Management
- Litigation & Disputes
- Corporate & Commercial

Attleborough | Aylsham | Dereham | Diss | Norwich | Watton | Wymondham

Lexcel
ACCREDITED

www.spiresolicitors.co.uk

SPIRE
SOLICITORS



Rosedale FUNERAL HOME

Providing the very best care.
We have established our
reputation by providing
an exceptional
service at an
affordable cost.



- BEREAVEMENT SUPPORT GROUP
- ADVICE ON FUNERAL GRANTS

A family
business –
we believe it
makes a
difference



Yard House
High Street
Attleborough
NR17 2EH

24 HOUR TEL
**01953
452538**

- b) Payments for July were approved.
- c) Resolved to enter onto a 3-year deal for insurance with Norris and Fisher.

5. Planning

- a) Applications received
 - i) The Old Coach House, Rosemary Lane: demolition of UPVC conservatory and construction of two-storey extension. Cllr Highton declared an interest and withdrew from the meeting during the discussion. The Council was unable to support the application without further information relating to the size of the extension in relation to the existing building and how the finishes will appear in the context of the surroundings.
 - ii) Anvil Cottage, Castle Hill Road – removal of section of garden wall to open access to an existing dropped kerb. (This application has since been withdrawn.)
 - iii) Inn on the Green – conversion of the existing building into a single dwelling. No objection.

b) Approval Received: The Haven, Rosemary Lane.

6. Neighbourhood Plan

Cllr Manning reported that the plan would be submitted to Breckland within a week. Then Section 16 Consultation would begin and all documents relating to the Plan would be available on the Breckland and np4nb websites. Consultation period is until 9th September. The Plan will then be sent to an Independent Examiner with the possibility of the Referendum being held in a few months.

7. Community Project Fund Group

The two vacancies have been filled by Sarah Nash and Gerry Walsh following an article by the Chair in Parish News.

Continued on page 24...

Everything for the motorist!



MILL HOUSE GARAGE

- ✓ M.O.T Station
- ✓ Autologic Diagnostics
- ✓ Computerised Four-wheel alignment
- ✓ Servicing

- ✓ Exhausts, Batteries, Welding, Bodywork
- ✓ Fully Equipped Tyre Bay, Insurance & Accident Repairs
- ✓ Breakdown Service

AIR
CONDITIONING
SPECIALISTS

ALL MAKES OF
TYRES SUPPLIED AT
COMPETITIVE PRICES

WE WILL
COLLECT AND
DELIVER YOUR CAR

LOAN CAR
AVAILABLE

SUPPLIERS
OF
FLOGAS

Norwich Road, New Buckenham, NR16 2BH
Phone: 01953 860572, 01953 860947

office@millhousegarage.co.uk
www.millhousegarage.co.uk

JOHN UNDERWOOD



ANTIQUARIAN BOOKS

Books and Manuscripts bought and sold
From C16th to C20th
Tel: 01953 860 746

Website: www.johnunderwoodbooks.co.uk
Email: underwoodbooks@icloud.com
Follow: underwoodbooks on Instagram

SWEEPERS

Chimney and Flue Cleaning Services

FOR A PROFESSIONAL SWEEP



Call Marty on:

01953 888544
07826 595385

Email: marty.the.sweep@gmail.com

EVENING AND WEEKEND SERVICE AVAILABLE

8. Highways – Traffic Calming

A discussion on options for improved traffic calming in the village to reduce traffic speed took place. Cllrs agreed to look into solutions and discuss at the next meeting.

9. Amenities

a) Play Area – Cllr Crossman was concerned that the Mushroom seating was in a poor state.

b) Public Footpaths – Cllr Bingham reported that the bridge on the footpath 5 south of the Dam Brigg needed repair. Clerk to contact County Council and Banham PC.

Mary Dowson on behalf of the Parish Council

200 Club Lucky Winners

Thank you for your continued support of the Village Hall. Here are the lucky winners for the latest draw. If you would like to join the 200 Club, please call Paul Madden (860850).

£20

Pam Wilson, Dan Leeder, Margaret Wright,
Peter Hodges

£10

Chris Hobley, Jill & Ian Ashford,
Darren Rush, Tony Lister, Deborah Sharman

LINDA'S CLEANING SERVICES

Honest, reliable lady
Over 10 years
experience

Seeks Domestic House
Cleaning Work

Call now for a quote
01379 677766,
07733033253



Thinking of selling or letting
your property?

Contact us we're happy to help...



propertysearch@millbanks.com

01953 453838



The Orchard
Montessori
Preschool & Nursery

OFSTED registered

NEWLY OPENED!

- Free spaces available for 2, 3 and 4 year olds
- Idyllic rural location
- Full Montessori Programme in line with the Early Years Foundation Stage (EYFS)
- Experienced and qualified staff and management team
- High staff/child ratios
- Exceptional indoor/outdoor play opportunities

The Orchard Montessori Preschool & Nursery
The Fen, Banham NR16 2BU

t: 01953 887863 m: 07443658586
e: theorchardmontessori@gmail.com

www.theorchardmontessori.co.uk



CATJOY Pet Services

We are a successful family-run business
providing high quality, bespoke care for your
cat(s) IN YOUR OWN HOME whenever you can't
be there.

Benefits we offer include:

- ☆ Security and stress free care in familiar surroundings
- ☆ Minimal disruption to normal routines
- ☆ Individual care and attention
- ☆ Value for money
- ☆ Peace of mind with a daily text or email

We look after other family pets too.

We are experienced cat owners, qualified in cat care,
reliable and **DBS checked**.

See customer feedback on our website

www.catjoy.co.uk

For more details, contact Jane

01953 888568 or 07875 266059

Catjoypetservices@gmail.com



Biz Buzz

County Broadband have come out of hiding, well almost. Biz Buzz had extended discussions with CB at the beginning of July in an effort to pin them down on exactly WHEN the promised Fast Fibre To the Property service would materialise. Biz Buzz established that the village was in the 'Design Phase' and got a clue as to the time-line. Perhaps jolted into communicating with residents, CB have now (19th July) sent out a letter saying, 'We are undertaking design and survey works ... we will also start to check if there is any existing infrastructure such as poles and pipes that we can use'.

The conversations with Biz Buzz, however, elicited slightly more info: a CB spokesman said he didn't know how long it would take, pointing out that there are many things that can slow the process of building, e.g. private roads that require lease waivers, uncertain legal ownership, planning regulations, etc. Even when the build to the intended area is achieved there has to be a discussion with each house as to how the fibre gets to the door. The most likely time frame is a build which starts towards the end of this year and is completed in the Autumn of 2022.

It's been five long years since the move to improve the mobile signal started. After much cajoling, the mysterious Juliet has emerged onto her balcony and communicated with the world beyond Waldron. As the Planning Manager for O2's infrastructure agents, she is our best bet to get answers. Juliet says: 'I do not have any further information on build timescales for you since my last e-mail I'm afraid, as this is still yet to be confirmed. Our clients are however working on and nearing the resolution to the mobile coverage issues in the area.' Well that's OK then!

Janet Trewin

**When you need some help
around the house....**



...call the Cavalry

- **Domestic cleaning**
- **Ironing / laundry – collection and delivery service**
- **Dog walking / feeding – daily home pet service whilst you are on holiday or at work**
- **Errands – any form of shopping, collection or delivery**

**Whatever your task,
we will endeavour to tackle it
to your satisfaction**

There are occasions when everyone could do with a little help around the house – in times of illness, disability or simply from pressure of a busy lifestyle.

Whether you need assistance on a regular basis or just occasional help, Household Cavalry is here to provide a dependable, diligent and trustworthy service.

Our carefully selected, fully vetted and insured team can tackle a whole range of household tasks.

Our fee structure is flexible to accommodate your needs, so if you would like more information about our services or a quotation, **please contact Sally on:**

01953 488635

07900 894902

Household Cavalry Limited

**Slate Plantation Barn, Home Farm Lane,
Merton, Thetford, Norfolk IP25 6QS
sgt.major@householdcavalryltd.co.uk**

**Buckenham House
Holistic & Beauty Therapies**

Facials
Reflexology
Indian Head
Massage ~ Swedish, Hot Stone, Lava Shell
Pregnancy Massage
Hopi Ear Candling
Manicure & Pedicure
Eyelash & Brow Tinting
Waxing

Using Eve Taylor, OPI, OPI Pro Spa, OPI Gelcolour, Orly,
Orly GelFX, Songbird and GiGi Wax Products

Beauty & Holistic Therapist NVQ3 and fully insured.
Member of the Association of Reflexologists

To book an appointment or for enquiries

Contact Jane on
01953 860013

OR

Find me on
facebook

New Buckenham Rd, Old Buckenham, NR17 1PW

WOMACK
BUILDING SUPPLIES LTD



01953 788077

07770 388314

07796 638877

info@womackbuildingsupplies.co.uk

Architectural Salvage

Church Flowers

Since the sad passing of Judith we are now short of one person on our team that cleans the church and arranges the flowers. Judith volunteered to help Margaret with the flowers and she was a wonderful assistant. However, Margaret feels that she needs a helper, not someone who necessarily can arrange flowers, as she would be more than willing to show them how, but who can assist and maybe cover when she is away. We are going to start getting more weddings and christenings and we do need to add one more to the team.

We normally spend no more than one hour on a Friday cleaning and arranging flowers, so if you would like to come and help we are in the church from 10:30am or give me a call.

Jimps 860191

Calling All Singers

With restrictions lifting, we are able to sing in church again, but our Evensong choir is down to a duet! Would you like to sing with us, just once a month? There's no obligation to join the church. The service is at 6:30pm on the first Sunday of the month. At present we just sing well known settings of the Magnificat and Nunc Dimittis and a Psalm, plus hymns and the traditional responses. If you're used to church music you would find it a doddle, and even if not, we could arrange a short practice beforehand. Please contact Susan Jowett 01953 860929 for more details.

Louise Casson

BEAUTY BOX

AND FOOT HEALTH PRACTICE

Dermalogica facials / Body treatments

Aromatherapy and Swedish massage

Indian Head massage

Manicures / Pedicures

Nail extensions

Waxing Electrolysis

General foot care / nail cutting

Corns / Hard Skin

Ingrowing toe nails

Verruca treatment / Diabetic Feet

HOME VISITS AVAILABLE

Gayle Wilby Dip CFHP / MPSPract

A MEMBER OF THE ALLIANCE OF PRIVATE SECTOR
PRACTITIONERS

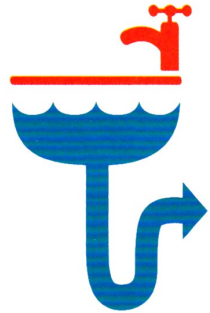
1 Norwich Road, New Buckenham

Tel: 01953 861 021

R.G. Plumbing and Heating

**Free
estimates**

**Fully
qualified
and insured**



07920 032363

RGaultPlumbing@gmail.com

HAND-MADE WINDOWS
DOORS, KITCHENS
AND FURNITURE

JB CARPENTRY



EVERYONE IS TALKING ABOUT
JAMIE'S HAND MADE WOODWORK
TELEPHONE JAMIE ON
01953 860 933

Broadland TREE SERVICES

- Tree Surgery
- Consultancy
- Landscaping
- Stump Grinding
- Wood chippings for sale
- Access Hire

J K Anderson
NDF F. ARBOR. A

P J Anderson
ND. ARB

The Limes, Rothbury Rd, Wymondham

t: 01953 607715

Sycamore House, Tanning Lane, New Buckenham

t: 01953 860370

www.broadlandtreeservices.co.uk

St Martin's Church Services – August 2021

Sun 1st	11:00am	Holy Communion	Trinity 9 Proper 13
Sun 8th	6:30pm	Evensong	Trinity 10 Proper 14
Sun 15th	11:00am	Morning Prayer	Trinity 11 Proper 15
Sun 22nd	11:00am	Morning Worship	Trinity 12 Proper 16
Sunday 29th	10:00am	Group Service at Kenninghall (TBC)	Trinity 13 Proper 17



Financial Advisers for Norwich, Norfolk, and Suffolk

We offer advice in many areas including:

Specialists in Pension Planning

Unit Trusts

ISAs

Investment Bonds

IHT Planning

Protection

Our family friendly approach is of utmost important to us, and we are always here for our clients and prospective clients. We offer a **free initial, no obligation** consultation.

Want to know more? Why not visit our website at www.anglianwealthmanagement.co.uk or contact the office today on 01603 752500 or Email us at anglianwm@sjpp.co.uk

Anglian Wealth Management, 124 Thorpe Road, Norwich, NR1 1RT

Anglian Wealth Management is an Appointed Representative of and represents only St. James's Place Wealth Management plc (which is authorised and regulated by the Financial Conduct Authority). The titles 'Partner' and 'Partner Practice' are marketing terms used to describe a St. James's Place representative

TEL - 01953 860008

EMAIL - STACEY@ANGELCAKESTEARM.CO.UK

ANGEL CAKES TEAROOM

NEW BUCKENHAM
NR16 2AF

FACEBOOK
WWW.FACEBOOK.COM/ANGELCAKESBYSTACEY/



We are a family run Tearooms/Cafe specializing in great homemade cooked food, refreshments, home comforts, customer service & most importantly CAKE!!!!

Pop in for a cup of coffee & cake or a spot of lunch in a relaxed environment. Stay as long as you like & chat with friends and consider us your home away from home.

Table service is provided so no need to wait around, just take a seat, you may lounge on the ground floor by the fireplace or sit upstairs by the large windows overlooking the beautiful village of New Buckenham.

SERVICES

- Bespoke Celebration Cakes (Birthdays, Weddings, Christenings etc)
- Afternoon Tea (Booking only)
- Private functions (Birthdays, Christenings, Funerals, Meetings etc) (Capacity 25 upstairs, 12 downstairs)
- Outside Catering (Functions, Corporate, Afternoon Tea etc)
- Wedding Afternoon Tea Catering (All China Supplied)
- Cake Decorating Classes.

For all inquiries please speak to a member of our staff in store or by telephone or you can drop us a message through our Facebook page.



New Buckenham Parish Council

- Chair:** Karen Hobley
(01953 860529 / karenhobley@hotmail.com)
- Vice-Chair:** Andrew Bingham
(01953 861150 / andrew.bingham100@gmail.com)
- Councillors:** Don Crossman (01953 861246)
Mary Dowson (01953 860320)
Steve Highton (01953 860499)
Mary Manning (01953 861242)
Andrew Nettleton (01953 860428)
- Clerk:** Trevor Wenman
(01379 641423 / parishclerk@newbuckenham.net)

The Parish Council meets at 7:30pm on the second Tuesday of every month at the Village Hall. Further information about how to join these meetings, and the Parish Council more generally, can be found on our notice board on the Village Green or on our website www.newbuckenhampc.info.

Contributions for the September 2021 issue of *New Buckenham Parish News* should be submitted by 6:00pm on Friday 20th August 2021 to Linda Bryan, Pine Cottage, Marsh Lane (861107), Michael Boswell, Peel House, Chapel Street (860015), Richard Hoggett, 9 Church Street (860136) or by email to editor@newbucknews.co.uk.