

# New Buckenham Parish News

**Eastern Angles  
Theatre Company**  
*presents*



**Wednesday  
1st April, 7.30pm**

**Bar from 7.00pm**

**Tickets: £9 and £8 (concs)  
from Kings Stores or  
[wegottickets.com](http://wegottickets.com)**



**March 2020**

TEL - 01953 860008

EMAIL - STACEY@ANGELCAKESTEAROOM.CO.UK

## ANGEL CAKES TEAROOM

NEW BUCKENHAM  
NR16 2AF

FACEBOOK:  
WWW.FACEBOOK.COM/ANGELCAKESBYSTACEY/



We are a family run Tearooms/Cafe specializing in great homemade cooked food, refreshments, home comforts, customer service & most importantly CAKE!!!

Pop in for a cup of coffee & cake or a spot of lunch in a relaxed environment. Stay as long as you like & chat with friends and consider us your home away from home.

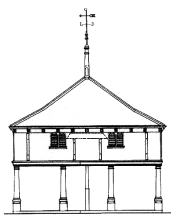
Table service is provided so no need to wait around, just take a seat, you may lounge on the ground floor by the fireplace or sit upstairs by the large windows overlooking the beautiful village of New Buckenham.

### SERVICES

- Bespoke Celebration Cakes (Birthdays, Weddings, Christenings etc)
- Afternoon Tea (Booking only)
- Private functions (Birthdays, Christenings, Funerals, Meetings etc) (Capacity 25 upstairs, 12 downstairs)
- Outside Catering (Functions, Corporate, Afternoon Tea etc)
- Wedding Afternoon Tea Catering (All China Supplied)
- Cake Decorating Classes.

For all inquires please speak to a member of our staff in store or by telephone or you can drop us a message through our Facebook page.





# New Buckenham Parish News

March 2020

## Eastern Angles: *Red Skies*

With the Seventieth anniversary of George Orwell's death this year Eastern Angles are bringing *Red Skies*, their spring tour, to audiences in East Anglia. Written by Ivan Cutting, who also wrote *Private Resistance*, the play centres on a fictional meeting between two of Suffolk's most famous residents: George Orwell, who took his name from the Ipswich river, and Arthur Ransome, who lived on it.

The play opens in Southwold just before the outbreak of war, and Orwell's father is dying. Arthur, along with his wife Evgenia, are sailing up the coast from Pin Mill. When Orwell, who is about to write *Animal Farm*, learns that Evgenia was the former secretary of Russia's revolutionary leader, Trotsky, and that Ransome used to play chess with Lenin, he hurries down to the harbour.

*Continued overleaf...*

## Thank You

We are very grateful to the Hobley Family, who have sponsored this month's issue of *Parish News*. We are very grateful to all our sponsors who help us to cover our production costs.

*Parish News Committee*

Ivan Cutting, on his Inspiration for the play said, ‘It was one of those lightening-strike moments. After directing *We Didn’t Mean to Go to Sea*, our play based on Ransome’s book, I was reading a new biography on Orwell and realised the two authors were so close by in 1939 – it was a way of engineering an imaginary meeting and everything flowed from there.

With their shared interest in fishing, fables and the east coast, the two writers begin a tentative friendship, until a mutual suspicion of spies causes sparks to fly. The extraordinary links between Orwell and Ransome and the women they loved fuels the flames. Resolution comes in 1950 with a new decade, and Orwell’s final days.

This comic, clever and at times deeply personal new play, probes behind the façade of two famous authors to find the secrets that both inspired and haunted them.

Red Skies will be performed at New Buckenham Village Hall on Wednesday 1st April at 7:30pm. Tickets cost £9 and £8 (concessions) and are available from Kings Stores or [wegottickets.com](http://wegottickets.com).

## Attention Cyclists!

While most cyclists are careful and considerate in the country lanes towards pedestrians, there are a few occasions when I have been suddenly surprised by the appearance of a cyclist, especially from behind, but sometimes in front of me.

In my own case, my white cane is there to indicate I am partially sighted. Could I please ask that you use the bell if you have one or otherwise announce your presence in good time, especially when approaching from behind pedestrians.

Thank you.

*Michael Boswell*

***When you need some help  
around the house....***



***...call the Cavalry***

- **Domestic cleaning**
- **Ironing / laundry – collection and delivery service**
- **Dog walking / feeding – daily home pet service whilst you are on holiday or at work**
- **Errands – any form of shopping, collection or delivery**

**Whatever your task,  
we will endeavour to tackle it  
to your satisfaction**

There are occasions when everyone could do with a little help around the house – in times of illness, disability or simply from pressure of a busy lifestyle.

Whether you need assistance on a regular basis or just occasional help, Household Cavalry is here to provide a dependable, diligent and trustworthy service.

Our carefully selected, fully vetted and insured team can tackle a whole range of household tasks.

Our fee structure is flexible to accommodate your needs, so if you would like more information about our services or a quotation, **please contact Sally on:**

**01953 488635**

**07900 894902**

**Household Cavalry Limited**

**Slate Plantation Barn, Home Farm Lane,  
Merton, Thetford, Norfolk IP25 6QS  
sgt.major@householdcavalryltd.co.uk**

***Buckenham House  
Holistic & Beauty Therapies***

Facials  
Reflexology  
Indian Head  
Massage ~ Swedish, Hot Stone, Lava Shell  
Pregnancy Massage  
Hopi Ear Candling  
Manicure & Pedicure  
Eyelash & Brow Tinting  
Waxing

Using Eve Taylor, OPI, OPI Pro Spa, OPI Gelcolour, Orly,  
Orly GelFX, Songbird and GiGi Wax Products

Beauty & Holistic Therapist NVQ3 and fully insured.  
Member of the Association of Reflexologists

To book an appointment or for enquiries  
Contact Jane on  
**01953 860013**

OR

Find me on  
**facebook**

New Buckenham Rd, Old Buckenham, NR17 1PW

**WOMACK**  
**BUILDING SUPPLIES LTD**



**01953 788077**

**07770 388314**

**07796 638877**

**info@womackbuildingsupplies.co.uk**

**Architectural Salvage**

# BEAUTY BOX

## AND FOOT HEALTH PRACTICE

Dermologica facials / Body treatments

Aromatherapy and Swedish massage

Indian Head massage

Manicures / Pedicures

Nail extensions

Waxing Electrolysis

General foot care / nail cutting

Corns / Hard Skin

Ingrowing toe nails

Verruca treatment / Diabetic Feet

HOME VISITS AVAILABLE

**Gayle Wilby Dip CFHP / MPSPract**

A MEMBER OF THE ALLIANCE OF PRIVATE SECTOR  
PRACTITIONERS

1 Norwich Road, New Buckenham

Tel: 01953 861 021

## Just Ask

## Property Maintenance

for all your property requirements  
specialising in Kitchens and Bathrooms

**Free No Obligation Quotes**

## Just Ask Paul

**on**

**01953 861476 or 07584 283624**

email: justaskpaul1@yahoo.co.uk



HAND-MADE WINDOWS  
DOORS, KITCHENS  
AND FURNITURE

# JB CARPENTRY



EVERYONE IS TALKING ABOUT  
JAMIE'S HAND MADE WOODWORK  
TELEPHONE JAMIE ON  
**01953 860 933**



# Broadland

## TREE SERVICES

- Tree Surgery
- Consultancy
- Landscaping
- Stump Grinding
- Wood chippings for sale
- Access Hire

J K Anderson  
NDF F. ARBOR. A

P J Anderson  
ND. ARB

The Limes, Rothbury Rd, Wymondham

**t: 01953 607715**

Sycamore House, Tanning Lane, New Buckenham

**t: 01953 860370**

**www.broadlandtreeservices.co.uk**

## In memory of Jan Prior

All of us who knew Jan will have special memories of an extraordinary, passionately idealistic woman. A professional psychologist who ran the Blackthorn Trust, an innovative therapy centre, before she came to live in New Buckenham, she had the ability to communicate even the most difficult thoughts and feelings with enviable clarity. She was a skilled mediator and peacemaker, but if she decided that a person or situation needed confronting she never flinched. That distinctive calm quiet gentle voice could be deceptive. Jan was no pushover.

When she and her husband Gordon moved here from Kent three and a half years ago, it was the fulfilment of a long-held dream. So when they learned of the return of the ovarian cancer, from which Jan was supposedly in remission, the news was especially devastating. But she swiftly rallied, as she was to do so many times during the countless ups and downs of what she described as her 'dance' (not 'fight' or 'battle'!) with cancer. Arming herself with all the information at her disposal, she insisted that her medics include her as an equal partner in their decisions. She spoke openly about her treatment, the inevitable setbacks and notorious side-effects, but she never allowed these things to diminish her. Refusing to perceive herself as a victim, she was determined to retain agency over her life, filling her days with friends, trips, projects, and so many activities (including singing with the Gissing singers and taking on shared responsibility for an allotment), that at times she seemed to be defying the laws of physics!

Jan was generous, funny, and fabulous company, the life and soul of our little micro community on Chapel Hill, hosting parties and celebrations and Christmas breakfasts.

*Continued overleaf...*

She knitted beautiful socks and baby clothes for friends, neighbours (and her consultants!) and to sell for charity. A staunch activist, she stood for the Green Party as a paper candidate, was an enthusiastic co-founder and supporter of Village&Vestry, and helped to establish New Buckenham CAN, a local climate action group. She was the busiest person I ever met who didn't have an actual full-time occupation. For Jan, the sheer living of life itself had become her occupation. It was a privilege and an inspiration to know her.

*Annie Dalton*

*(An incomplete version of this piece was printed in error in the last issue of Parish News for which the committee would like to apologise. Ed.)*

## Jitka Hollman

I am sad to report the passing of Jitka Hollmann of Marsh Lane, who died on 26th January, aged 76.

Jitka was born in Czechoslovakia, now the Czech Republic, but lived for 40 years in New Buckenham. She was an intelligent lady who spoke several languages, she became a teacher at Loddon High School and rose to be Head of Year. She was also a practising Buddhist and frequented the Buddhist Centre in Attleborough.

She was a very independent and private person and as she became very ill, her last wish was to die in her own home, as compliant with her religious beliefs. 'We' were able to grant this wish through the amazing support of, especially, the Norfolk Paramedic Services and the Community Hospice Nurses. However, a big thank you must go to Sue Gladwin, who not only gave up her weekend, but whose medical knowledge and support was invaluable throughout this difficult time.

*Linda Kerr*

# St Mary's Residential Care Home

Market Place, New Buckenham, Norfolk, NR16 2AN

**tel: 01953 860 956 email: [manager@stmaryshome.co.uk](mailto:manager@stmaryshome.co.uk)**

A home from home, at St Mary's, we offer 24-hour person-centered care within safe, warm and friendly surroundings with an emphasis on providing a high quality of life.

- Care services offered include day care, respite, dementia, palliative, end of life and long/short-term residential care
- Day care services include hot meals & refreshments
- Freshly prepared meals, including catering for special diets - Consistently received highest Food Hygiene rating of 5 star
- Single occupancy rooms, passenger lift, two enclosed gardens, Wi-Fi, nurse call facilities, wheelchair friendly wet room and a hair salon
- Residents enjoy engaging and stimulating activities
- Top ratings by residents, family & friends and healthcare professionals
- Social Services and self-funding residents welcome
- Self-funding residents offered very competitive rates
- Care package tailor-made to meet your requirements
- No-obligation free trial day offered

**For further information or for a fact-finding visit, please contact  
the manager on 01953 860 956 or email  
[manager@stmaryshome.co.uk](mailto:manager@stmaryshome.co.uk)**

Registered and licensed to provide services by the Care Quality Commission (CQC)

**- Under new management -**

# Tommy Winser

From my mum Rosemary, my brother Robin and myself, we would like to extend a huge vote of thanks to everyone who attended my dad's funeral at the church on 23rd January. The church was absolutely packed and there were so many friendly faces from all of his friends in the village and surrounding area. There were so many friends from his past, including work colleagues and old friends who have long since left the village.

My dad never demanded respect from anyone he knew and tried to be as warm as possible to all he ever encountered, but it shows how many people thought enough of him to turn out for his send-off. The Silver Band played wonderfully and turned a sombre occasion into a much brighter event and lifted everyone's spirits, especially the members of his family.

The British Heart Foundation and Prostate Cancer UK both received a share of a tremendous collection of over £450, which you all helped towards, so a huge thank you to all for their generosity.

The family members were sorry to be unable to stay and chat but time was short for the cremation ceremony at St Faith's so we needed to leave the village promptly.

Many, many thanks for the cards and best wishes, and we look forward to seeing everyone around the village as usual.

*Patrick Winser*



Outstanding advice  
and legal expertise for  
the region

### How can we help?

- Agriculture
- Conveyancing
- Employment
- Family
- Wills, Tax & Probate
- Tenancy Management
- Litigation & Disputes
- Corporate & Commercial

Attleborough | Aylsham | Dereham | Diss | Norwich | Walton | Wymondham



[www.spiresolicitors.co.uk](http://www.spiresolicitors.co.uk)



# Rosedale FUNERAL HOME

Providing the very best care.  
We have established our  
reputation by providing  
an exceptional  
service at an  
affordable cost.



- BEREAVEMENT SUPPORT GROUP
- ADVICE ON FUNERAL GRANTS

A family  
business –  
we believe it  
makes a  
difference



Yard House  
High Street  
Attleborough  
NR17 2EH

24 HOUR TEL  
**01953  
452538**

C.A. Rush Ltd., t/a Mill House Garage

# MILL HOUSE GARAGE

THE COMMON, NEW BUCKENHAM

Tel: 01953 860 572-Fax: 01953 860 090

E-Mail: [clive.rush@btconnect.com](mailto:clive.rush@btconnect.com)

## EVERYTHING FOR THE MOTORIST...

M.O.T Station inc. Diesel and Catalyst cars

Full Diagnostic Facilities

Up-to-date E.C.U - Engine Management Scanner

## Servicing

Exhausts, Batteries, Welding, Bodywork. Fully Equipped Tyre Bay

Insurance and Accident Repairs

**Breakdown Service**

## AIR CONDITIONING SPECIALISTS

All makes of tyres at very low prices

**WE WILL COLLECT AND RE-DELIVER YOUR CAR**

## John Underwood Antiquarian Books

from 16<sup>th</sup> to 19<sup>th</sup> centuries

**Newspapers from 17<sup>th</sup> century**

**Modern First Editions**

**Children's Books**

**from Pooh to Potter**

All the above and much more!

Book Room and Bindery open most  
days .. please check before  
visiting.

**BOOKS WANTED**

**TO PURCHASE**

**BOOKBINDING CLASSES**

Plum Tree Farm, Uppate Street,

Carleton Rode Tel: 01953 860746

[www.johnunderwoodbooks.com](http://www.johnunderwoodbooks.com)

## SWEEPERS

Chimney and Flue Cleaning Services

FOR A PROFESSIONAL SWEEP



Call Marty on:

**01953 888544**  
**07826 595385**

Email: [marty.the.sweep@gmail.com](mailto:marty.the.sweep@gmail.com)

**EVENING AND WEEKEND SERVICE AVAILABLE**

# Dates for Gardeners

Hello everyone and a Happy New Year to you all!

I have some dates for you to put in your diary. First, Sunday July 5th will be Open Gardens, which as usual will be run from the Village Hall starting at midday and finishing at 6:00pm. We have been very lucky with the weather in the past (except one Sunday when we had floods) and have had lots of visitors. Car parking will be up at the Hall, so no problems there, but a lot of people will be wandering around. If you wish to take part in this excellent event then please let me know (email at the end). We need to finalise about month before in time to get printing done, etc.

Also, if anyone can help on the day with refreshments (nothing too fancy) and car parking, I would be grateful. Again, we need to know about a month in advance.

The second date is the Village Show, which this year is on Saturday 25th July. We will be meeting to finalise the schedule soon and will issue it at about Easter time. Last year we had a much better attendance and higher number of entries when we held the show later in July. Let's hope the same happens this year!

We have found that the judging takes a long time, so we will be closing doors for entries at 10:45am to allow judges an extra 15 minutes. Again, we will looking to have some volunteers to help with refreshments, but as the presentation of prizes will be at 3pm, there is only a little over an hour of actual serving as we open for the public at 2pm. Also, Dr Mandy will be entertaining the children from 2pm with 'Let's be a DNA Detective'!

So, make a date in your diaries now for both of these events. Happy growing from the Gardening Group!

*Jimpy Casson*

[petercasson219@btinternet.com](mailto:petercasson219@btinternet.com)

# Update from the Village Hall Trust

The first meeting of the Trustees in 2020 started with memories of those who are no longer with us. Last year saw the deaths of Joyce Little, Brian Knappett, Sonja Lee and Tommy Winsor, all of whom made major contributions to our community and particularly the Village Hall during their lives.

The Village Hall Trust has been left a generous bequest from Joyce Little, who lived in the village for over three decades. Her energy and support for community arts and activities is well remembered. The Trust also received a bequest from Brian Knappett who as caretaker really did care for the hall and dedicated 21 years to looking after it.

Following the Trust meeting in late January, it was agreed that the money received from these bequests would be used to fund a major refurbishment. The suggested work will include refurbishment of: the meeting room, the store area, the heating, the Hall lighting and the stage lighting. The Trustees have set up a working group to manage the refurbishment using the skills and experience within this working group to move the project forwards. The aim is to ensure that we enhance the facilities available in our Village Hall to meet the recreational and social needs of all in the village. The Trustees are grateful to those whose past generosity will help ensure the Hall for the future.

If you are interested in getting involved and have skills that will help, please contact the Trustees by email:  
[info@newbuckenhamvillagehall.co.uk](mailto:info@newbuckenhamvillagehall.co.uk).

For more information about the hall and the Trustees please go to: [www.newbuckenhamvillagehall.co.uk](http://www.newbuckenhamvillagehall.co.uk).

*Juliet Fulford*

*New Buckenham Village Hall Trust*



# The Orchard Montessori

Preschool & Nursery

OFSTED registered

**NEWLY OPENED!**

- Free spaces available for 2, 3 and 4 year olds
- Idyllic rural location
- Full Montessori Programme in line with the Early Years Foundation Stage (EYFS)
- Experienced and qualified staff and management team
- High staff/child ratios
- Exceptional indoor/outdoor play opportunities

**The Orchard Montessori Preschool & Nursery  
The Fen, Banham NR16 2BU**

t: 01953 887863 m: 07443658586  
e: [theorchardmontessori@gmail.com](mailto:theorchardmontessori@gmail.com)  
[www.theorchardmontessori.co.uk](http://www.theorchardmontessori.co.uk)



## Pete Vale



**Professional  
Painter, Decorator  
and Airless Sprayer**

Accredited by the P.D.A  
High quality, friendly service  
Fully insured  
Free quotations

**T 01953 861 230**

**M 07986 114 108**

**E [peter.vale@hotmail.co.uk](mailto:peter.vale@hotmail.co.uk)**



**PValeDecorating**



# Andy Free

Dip FD



***Independent family funeral director***

*'Quietly helping and guiding bereaved families for many years now, our family team offer guidance and direction at a time most needed'*

*Pre-paid Funeral Plans and Memorialisation Available*

**Attleborough 01953 452455**

**Wymondham 01953 605222**

[attleborough@andyfree.com](mailto:attleborough@andyfree.com)

[wymondham@andyfree.com](mailto:wymondham@andyfree.com)

***24 hour service***

# Kings Stores

We offer a wide range of services and supplies including groceries, fresh meat and veg, newspapers, lottery, dry cleaners and lots more ...

**Opening Hours: Monday – Saturday 7 am to 7 pm**  
**Sunday 8 am – 12.00 pm**

Post Office: Wednesday 9.30 am – 12.00 pm

Why not call in and give us a try?

Look out for our special offers!

01953 860264

## New Buckenham Parish Council

**Chair:** Karen Hobley  
(01953 860529 / [karenhobley@hotmail.com](mailto:karenhobley@hotmail.com))

**Vice-Chair:** Andrew Bingham  
(01953 861150 / [andrew.bingham100@gmail.com](mailto:andrew.bingham100@gmail.com))

**Councillors:** Don Crossman (01953 861246)

Mary Dowson (01953 860320)

Steve Highton (01953 860499)

Mary Manning (01953 861242)

Paul Martin (01953 861117)

**Clerk:** Trevor Wenman  
(01379 641423 / [parishclerk@newbuckenham.net](mailto:parishclerk@newbuckenham.net))

The Parish Council meets at 7:30pm in the Village Hall on the second Tuesday of every month. Further information about the Parish Council can be found on our notice board on the Village Green or on our website [www.newbuckenhampc.info](http://www.newbuckenhampc.info).

# New Buckenham Art Exhibition 2020

The opening night of the Art Exhibition is Friday 10th April at 7:30pm. The exhibition is then open from Saturday 11th to Monday 13th April from 11am until 4:30pm.

We do please need your help! I have included The Helpers' Rota 2019 (see page 19), so that those of you who kindly helped last year may like to pick the same time again. It would be helpful if you are able to help again this year that you let Clive know as soon as you can. There will, I am sure, be spaces on the Rota we need to fill, so if you would like to be involved over the weekend please let us know: Clive Rush 01953 860572 / [clive.rush@btconnect.com](mailto:clive.rush@btconnect.com)

**Erecting the Screens:** This is a task for the strong, as the screens are very heavy to lift. If you can help us, we shall be putting the screens up in the Village Hall on Thursday 9th April at 10pm, after the Band Practice. It usually takes about an hour to set up.

**Hanging the Pictures:** This takes place on Friday 10th April from 9am until lunch time, but there are usually some things to do in the afternoon to set the scene ready for the opening in the evening. It is an interesting job and don't worry if you have not done it before, you will be shown how to go about it and usually two people work together. If you would like to give it a go please let us know: Hazel Rush 01953 861014 / [hazelrush@btconnect.com](mailto:hazelrush@btconnect.com)

**Dismantling the Exhibition:** This takes place on Monday 13th April after 4:30pm. This is when we return pictures to the artists and to people who have bought pictures at the exhibition. This takes about an hour and a half. The second part is dismantling the screens and clearing the hall. This is where we need people who are able to carry the heavy screens. It is difficult to give an exact time for this, as the two

*Continued overleaf...*

procedures overlap. I would say you would be wise to come about 5pm. Please let Jon Halfacree know if you can help with this: Jon Halfacree 01953 860064 / [jonhalfacree@btinternet.com](mailto:jonhalfacree@btinternet.com)

Cakes: Could you bake a cake for us? That would be wonderful! We do have a long tradition of lovely cakes of all kinds. Many people love to stop and have a coffee and slice of cake. We would need these on the Saturday 11th for 10am at the Village Hall. Please contact Pauline Dynes 01953 860053 / [psdynes@hotmail.com](mailto:psdynes@hotmail.com).

Raffle Prizes: Our raffle is usually a great success with lovely prizes and, like everything connected with this event, it helps to bring in more money for our church and Village Hall. If you can donate a prize for this would great. They can be brought to Mill House when you like.

Thank you!

*Hazel Rush*

*Art Exhibition Committee*

TIME	TASK	SATURDAY	SUNDAY	MONDAY
11–12:30	S	Mary Dowson Charles Wolfe	Carolyn Hupton David Hupton	Sandra Lester Rory Lester
	A	Gerry/Geoff Gildersleeve	Nancy Robertson Vivienne Walker	Mary Manning Mike Boswell
12:30–2:30	S	Judith Kearney Karen Hobley	Hazel Rush Ed Dowling	Carolyn Hupton Audrey Dowling
	A	Pauline Dynes Alan Dynes	Ron Thompson Judith Kearney	John Frith Lou Frith
2:30–4:30	S	Richard Anderson Charles Wolfe	Violet Highton Clive Rush	Ann Gascoyne Karen Hobley
	A	Paul Madden Pamela Madden	Audrey Dowling Ed Dowling	Robert/Meryl St. John Cooper
11–2	R	Stevie Hobley Gill Goodwin	Bella Chirodian Janet Ovens	Juliet Fulford Andrew Bingham
2–4:30		Gill Goodwin Sue Cattermole	Linda Bryan Kathy Steel	Alice Cattermole Andrea Halfacree

Tasks: A = Admission; S = Sales; R = Refreshments

# New Buckenham Parish Council

All meetings are held on the second Tuesday of the month at 7:30pm in the Village Hall. The dates for 2020 are 10th March; 14th April; 12th May; 9th June; 14th July; 8th September; 13th October; 10th November and 8th December. The Parish Council does not meet in August.

*Karen Hobley - Chair*

## Summary of Draft Minutes February 2020

1. Apologies Cllr Crossman and District and County Councillor Askew.
2. PC resolved to approve draft Minutes January meeting.
3. Declaration of Interest  
Cllr Manning declared an interest in item 7 as one of the adjoining landowners.
4. Public Participation
  - a) Parishioners' Comments: there were none.
  - b) District/County Cllr: written report was noted.
  - c) Parish Cllr Reports: the sign to the Village Hall is rotten, understood as the responsibility of the Village Hall Trust.
5. Financial Matters
  - a) Financial Report for January was received and noted.
  - b) Payments for February were approved.
  - c) Clerk's salary: following discussion with the Chair and Vice Chair it was decided that the Clerk would reduce his hours to 7.5 per week from 1st February.
6. Planning  
Teasel Cottage, Chapel Street: Demolition of existing conservatory to be replaced by single-storey extension and new single-storey outbuildings to the rear, no objections.

## 7. Rights of Way

Enough evidence has been gathered in support of linking Marsh Lane and Footpath 5. Clerk will liaise with Mrs Cattermole to complete all necessary forms, official notices and deliver all evidence to the Highway Authority.

## 8. Neighbourhood Plan

It was noted that closing date for comments on the draft plan is 14th February. A full report at the next meeting.

## 9. Amenities

a) Cemetery: Cllr Martin has reviewed the access around the cemetery, because there are multiple access points it was not thought to be practical to physically restrict access. This will be reviewed if further incidents occur.

b) Closed Churchyard: A discussion will take place at the next meeting regarding the wildlife management plan and establishing a policy on the planting of memorial trees.

c) Grounds Maintenance: Broadland Tree Services has agreed to roll forward the current contract to 2020 subject to inflation. Contract to be reviewed in September.

d) Play Area: Options for new equipment from Section 106 monies to be discussed next meeting.

*Mary Dowson on behalf of the Parish Council*

# Biz Buzz March 2020



This month at [www.np4nb.online](http://www.np4nb.online):

- ⇒ What's to be done about parking in Attleborough? Your chance to be part of the consultation.
- ⇒ Times are hard, money is short, but we can tell you how to find funding.
- ⇒ Have you had Coffee with a Cop? We have... perhaps you are missing out!
- ⇒ And, of course, the extraordinary twists and turns of the Mobile Phone Mast Mystery, which is even more bizarre than before!

If you have any biz notes please send to: [info@np4nb.online](mailto:info@np4nb.online).

Biz Buzz is a group of business folk in and around the village spreading news, offering support and swapping contacts.

*Janet Trewin*

## Antarctica: As far as you can go

On Saturday 14th March at 7:30pm in Old Buckenham Village Hall, Steve Milner, a good friend of the Gardening Group and fellow photographers in New Buckenham, will be giving an illustrated talk about his and his wife's trip to Antarctica last year. He has taken plenty of photographs and wishes to share their experiences together with the changes he saw resulting from climate change.

Steve asks for donations which will go towards Old Buckenham Village Hall and the windmill restoration. There will also be a bar.

This will be a most interesting talk and I advise you not to miss it. Put the details in your diary now!

*Peter Casson*

## 200 Club Lucky Winners

Thank you for your continued support of the Village Hall. Here are the lucky winners for February's draw. If you would like to join the 200 Club, please call Paul Madden.

£20

Katie Hupton, Gene Womack

£10

Chris Hobley, Jean Norton, Ellie Newport,  
Doreen Madden, Hayley Knight, Paul Bird,  
Danni Williamson

## R.BUNN ELECTRICAL

Richard Bunn

*LED Lighting - Indoor/Outdoor Lighting*

*Extensions - Rewires - New Builds*

*Additional Lights & Sockets*

*Mains Upgrades*

**07899936057**

Competitive Hourly Rates

R.BunnElectrical@Gmail.com

No V.A.T

Part P Approved

## Lent Lunch

There will be Lent Lunch in St Martin's church at 12:30pm on Saturday 21st March, which we hope as many of you as possible will come to. It will be in aid of the Bishop's Lent Appeal, which is trying to buy a suitably rugged vehicle to connect a remote village in Papua New Guinea with the outside world. This is an opportunity for us to support a really poor community and know that the money will be well used. We wish we could supply the temperature it would be in Papua New Guinea, but there are advantages in living in this country, too, like roads!

*Helen Pearson*

## Annual Church Meetings at St Martin's

The Annual Church Parochial Meetings, to give them their full title, have to take place every year by law. New churchwardens (if only...) have to be elected by people on the Church Electoral Roll, and then there are reports on everything that goes on, appointments to various bodies, etc. The meeting is also a chance for anyone who wants to come and have their say about anything they want. It will be at about 12pm after the morning service on 29th March and normally takes a bit under an hour. There will be refreshments and everyone is very welcome to come and participate or just observe.

*Helen Pearson*

# Darren Rush

**BUILDER & DECORATOR**

All types of building work undertaken including:-

- Specialising in Older Properties
- Extensions / Loft Conversions
- Roofing
- Property Maintenance
- Landscape Gardening

**MOBILE: 07778 602 026**

**HOME: 01953 860 693**



## Slimming World with Amy

Feel your best in 2019 where a world of support and friendship awaits!

**Monday** – New Buckenham Village Hall  
5.30 & 7.30pm

**Thursday** – Attleborough Scout Hut  
(near the train station)  
9.30am

Pop along or contact Amy  
07590 806046



# SMART GARDENS

**Lawns and Borders Maintained**

**Spring and Autumn Pruning**

**Hedges Trimmed**

**For free quote ring Vicky or Alan**

**01953 860451 / vickyal0712@gmail.com**

# St Martin's Church

## March 2020

Sunday 1st	11:00am	Parish Eucharist	Lent 1
Sunday 8th	11:00am	Parish Eucharist	Lent 2
Sunday 15th	11:00am	Mattins	Lent 3
Sunday 22nd	11:00am	Morning Worship	Mothering Sunday
Sunday 29th	11:00am	Parish Eucharist (followed by Annual Meeting)	Lent 5

### Tacolneston Osteopaths

Yvonne Ayliffe D.O.FSCCO BSSCMD MICrA  
Chloe Savage M.Ost DPO Chanté Batson M.Ost  
9 The Fields, Tacolneston

**Tel: 01953 789629**

**07770652839**

[reception@norfolkost.co.uk](mailto:reception@norfolkost.co.uk)

- Experienced osteopath qualified for 38 years
- Gentle Osteopathy for the elderly
- Cranial Osteopathy
- Headaches and migraine, acute necks
- Sporting injuries, accidents & whiplash
- For muscular and joint problems
- Repetitive strain injuries at work or at home
- Pre- & post- pregnancy for mother and baby

**OSTEOPATHY FOR ALL**

**Also at Aylsham 01263 732028**



### *Breckland Brush* *Chimney Sweep* *& Stove Installation*



**NATIONAL ASSOC. OF CHIMNEY SWEEPS**

**Qualified Experienced Professional**

[sweep@brecklandbrush.co.uk](mailto:sweep@brecklandbrush.co.uk)

**01953 881579 / 07966 298777**



**Eastern Angles  
Theatre Company**  
*presents*






**Wednesday  
1st April, 7.30pm**

Bar from 7.00pm  
Tickets: £9 and £8 (concs)  
from Kings Stores or  
[wegottickets.com](http://wegottickets.com)

**ART EXHIBITION**

**Fri 10 April (opening night)**  
**Sat–Mon 11 – 13 April**



**Vestry & Village  
Coffee Morning**

**Saturday 4 April 10.30am at St. Martin's Church**

# Dates For Your Diary

The Village Hall Bookings Administrator is Stevie Hobley

01953 860463 ~ 07469 715517 ~ [bookings@newbuckenhambvillagehall.co.uk](mailto:bookings@newbuckenhambvillagehall.co.uk)

March 2020	
Tuesday 10th	Parish Council, Village Hall, 7:30pm
Saturday 14th	Illustrated Talk on Antarctica, Old Buckenham Village Hall, 7:30pm
Thursday 19th	Good Companions, Village Hall, 2:30pm
Saturday 21st	Lent Lunch, St Martin's Church, 12:30pm
Sunday 29th	Annual Church Meeting, St Martin's Church, 12pm (following 11am service)
Wednesday 1st April	Eastern Angles: <i>Red Skies</i> , Village Hall, 7:30pm

Contributions for the April 2020 issue of *New Buckenham Parish News* should be submitted by 6:00pm on Friday 20th March 2020 to Linda Bryan, Pine Cottage, Marsh Lane (861107), Michael Boswell, Peel House, Chapel Street (860015), Richard Hoggett, 9 Church Street (860136) or by email to [editor@newbucknews.co.uk](mailto:editor@newbucknews.co.uk).

TO ADVERTISE: please contact Mary Dowson on 01953 860320 or [mdowson@btinternet.com](mailto:mdowson@btinternet.com)