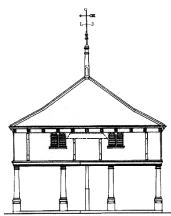


New Buckenham Parish News



April 2020



New Buckenham Parish News

April 2020

Coronavirus

As you will see in these pages, the social changes required to contain and delay the spread of the coronavirus are having a strong impact on everyday life in the village. Schools, pubs and the Village Hall are closed until further notice, most of the planned village events have been cancelled, and many of our more vulnerable residents are self-isolating. Kings Stores plans to stay open as

Another impact of the lockdown is the fact that we haven't been able to get this issue of *Parish News* printed professionally, and are instead making this issue available online. While it may not be possible for us to continue to produce the magazine in its current format over the summer, please be assured that we will make every effort to continue to get important news to you, so do keep your contributions coming in.

It is possible to access an online version of *Parish News* at <http://newbuckenham.net/index.php/parish-news>. If you find yourself with time to fill, you can download back-issues of the magazine from 2017 onwards!

It is also possible to receive your copy of *Parish News* by email, and if you would like to do this you can sign up for our mailing list here: <http://eepurl.com/dhB-1P>.

Finally, we wish you all the best during this difficult time. Look after yourselves and each other.

Parish News Committee

New Buckenham Village Hall

We are very sorry to announce that from Midnight on Friday 20th March the Village Hall will be closed until further notice.

This decision was not made lightly, but following the current government guidelines of self-isolation for vulnerable groups and social distancing we feel this is the right action to take.

If you have a booking with us which you paid in advance we will be in contact to discuss if you would like this to be fully refunded or held in credit for when the hall re-opens.

Groups who usually receive invoices will not be charged any hire fees from 21st March until we re-open. Your bookings will remain in the diary and when the hall re-opens your classes and groups are welcome to continue.

We will review the situation regularly and maintain contact with all hirers to keep you informed.

Please note that the hall will be locked and no access will be possible without prior arrangement. If you have items in storage you would like to access please contact Stevie Hobley via email bookings@newbuckenhamvillagehall.co.uk or call on 01953 860611.

Please look after yourselves and your neighbours. We will have the hall bustling with community life again as soon as we have the green light to do so!

We thank you for your support and understanding during this difficult time.

New Buckenham Village Hall Trustees

***When you need some help
around the house....***



...call the Cavalry

- **Domestic cleaning**
- **Ironing / laundry – collection and delivery service**
- **Dog walking / feeding – daily home pet service whilst you are on holiday or at work**
- **Errands – any form of shopping, collection or delivery**

**Whatever your task,
we will endeavour to tackle it
to your satisfaction**

There are occasions when everyone could do with a little help around the house – in times of illness, disability or simply from pressure of a busy lifestyle.

Whether you need assistance on a regular basis or just occasional help, Household Cavalry is here to provide a dependable, diligent and trustworthy service.

Our carefully selected, fully vetted and insured team can tackle a whole range of household tasks.

Our fee structure is flexible to accommodate your needs, so if you would like more information about our services or a quotation, **please contact Sally on:**

01953 488635

07900 894902

Household Cavalry Limited

**Slate Plantation Barn, Home Farm Lane,
Merton, Thetford, Norfolk IP25 6QS
sgt.major@householdcavalryltd.co.uk**

***Buckenham House
Holistic & Beauty Therapies***

Facials
Reflexology
Indian Head
Massage ~ Swedish, Hot Stone, Lava Shell
Pregnancy Massage
Hopi Ear Candling
Manicure & Pedicure
Eyelash & Brow Tinting
Waxing

Using Eve Taylor, OPI, OPI Pro Spa, OPI Gelcolour, Orly,
Orly GelFX, Songbird and GiGi Wax Products

Beauty & Holistic Therapist NVQ3 and fully insured.
Member of the Association of Reflexologists

To book an appointment or for enquiries
Contact Jane on
01953 860013

OR

Find me on
facebook

New Buckenham Rd, Old Buckenham, NR17 1PW

WOMACK
BUILDING SUPPLIES LTD



01953 788077

07770 388314

07796 638877

info@womackbuildingsupplies.co.uk

Architectural Salvage

BEAUTY BOX

AND FOOT HEALTH PRACTICE

Dermologica facials / Body treatments

Aromatherapy and Swedish massage

Indian Head massage

Manicures / Pedicures

Nail extensions

Waxing Electrolysis

General foot care / nail cutting

Corns / Hard Skin

Ingrowing toe nails

Verruca treatment / Diabetic Feet

HOME VISITS AVAILABLE

Gayle Wilby Dip CFHP / MPSPract

A MEMBER OF THE ALLIANCE OF PRIVATE SECTOR
PRACTITIONERS

1 Norwich Road, New Buckenham

Tel: 01953 861 021

Just Ask

Property Maintenance

for all your property requirements
specialising in Kitchens and Bathrooms

Free No Obligation Quotes

Just Ask Paul

on

01953 861476 or 07584 283624

email: justaskpaul1@yahoo.co.uk



HAND-MADE WINDOWS
DOORS, KITCHENS
AND FURNITURE

JB CARPENTRY



EVERYONE IS TALKING ABOUT
JAMIE'S HAND MADE WOODWORK
TELEPHONE JAMIE ON
01953 860 933

Broadland

TREE SERVICES

- Tree Surgery
- Consultancy
- Landscaping
- Stump Grinding
- Wood chippings for sale
- Access Hire

J K Anderson
NDF F. ARBOR. A

P J Anderson
ND. ARB

The Limes, Rothbury Rd, Wymondham

t: 01953 607715

Sycamore House, Tanning Lane, New Buckenham

t: 01953 860370

www.broadlandtreeservices.co.uk

St Martin's Church

This is something we never thought we should ever, ever see – the Church of England, in compliance with the Government's orders to overcome the Coronavirus epidemic, has ordered that all public worship must be cancelled. Until the virus is under control, it is necessary and we have no alternative but to comply. The church will therefore be closed until such time as it is safe to reopen.

In the meantime, the Rector will provide Sunday prayers and readings for anyone who would like them by e-mail and on paper. If you would like to receive one, please get in touch with one of us and we shall be very happy to arrange it.

Stephen Wright (887183), Helen Pearson (860251) & Susan Hilton-Jowett (860929)

New Buckenham Parish Council

The April Parish Council meeting has been cancelled, and a further update will be provided in next month's *Parish News*. In the meantime, contact details for the Parish Council can be found on page 15.

The Parish Council would like to stress that the Play Area is closed until further notice. We are fully aware of our responsibility to safeguard our youngsters and have taped it off on two occasions. Unfortunately, the tape has been subsequently removed on both occasions. We are committed to re-opening it as soon as we are able to but, in the meantime, please could everyone spread the word that it is closed.

Many thanks.

Karen Hobley

01953 860529 / karenhobley@hotmail.com

Village&Vestry Coffee Morning

You will not be surprised to read that the Coffee Morning planned for 4th April has been postponed. We look forward to welcoming you again very soon.

Maria Lloyd

Drop-In Café

The monthly Drop-In Café is cancelled for the foreseeable future, but we hope to be up and running again soon. I'd like to thank everyone who has attended, helped set up/clear away, made tea, brought biscuits and cakes. We WILL be back!

Kathie Steel (860521)

New Buckenham Art Exhibition

The organisers of the New Buckenham Art Exhibition have decided to cancel this year's exhibition, but are looking forward to another successful exhibition in 2021!

Hazel Rush

The Inn on the Green

As well as the temporary closures brought about by the lockdown, the coronavirus has also brought forward the planned closure of the Inn on the Green, which was reported in the February issue of *Parish News*. We would like to express our sincere thanks to David and Julie, and their staff, for the wonderful meals and many happy times which they have provided us at both the Inn on the Green and the Gamekeeper during the last 12 years. We wish them all the best with their retirement!

Parish News Committee

St Mary's Residential Care Home

Market Place, New Buckenham, Norfolk, NR16 2AN

tel: 01953 860 956 email: manager@stmaryshome.co.uk

A home from home, at St Mary's, we offer 24-hour person-centered care within safe, warm and friendly surroundings with an emphasis on providing a high quality of life.

- Care services offered include day care, respite, dementia, palliative, end of life and long/short-term residential care
- Day care services include hot meals & refreshments
- Freshly prepared meals, including catering for special diets - Consistently received highest Food Hygiene rating of 5 star
- Single occupancy rooms, passenger lift, two enclosed gardens, Wi-Fi, nurse call facilities, wheelchair friendly wet room and a hair salon
- Residents enjoy engaging and stimulating activities
- Top ratings by residents, family & friends and healthcare professionals
- Social Services and self-funding residents welcome
- Self-funding residents offered very competitive rates
- Care package tailor-made to meet your requirements
- No-obligation free trial day offered

**For further information or for a fact-finding visit, please contact
the manager on 01953 860 956 or email
manager@stmaryshome.co.uk**

Registered and licensed to provide services by the Care Quality Commission (CQC)

- Under new management -

Comments on the Plan

The Neighbourhood Plan team launched the Plan on 21st December (was it that long ago?) and urged village residents to make their comments. Every household had a copy delivered. We also contacted landowners, statutory organisations such as Breckland Council and Historic England, and utility companies. When the consultation closed in mid-February we had received responses from villagers (27), village organisations (3), statutory consultees (5) and landowners (2). Nearly all this was done by email but some village responses were left at Kings Stores.

The team is now carefully sifting all the responses to see where the Plan should be modified in light of the comments made, whether by correcting factual errors, removing ambiguities, rephrasing to suit 'planning-speak' or just adopting good ideas. This takes time but the Plan will be much better as a result thanks to everyone's thoughtful and constructive comments. Eventually all the comments made and our responses will be posted online.

We are grateful to all who responded. Our special thanks go to Sue and her staff at Kings Stores who have displayed posters and leaflets and acted as our post office throughout the project.

Neighbourhood Plan Team



Outstanding advice
and legal expertise for
the region

How can we help?

- Agriculture
- Conveyancing
- Employment
- Family
- Wills, Tax & Probate
- Tenancy Management
- Litigation & Disputes
- Corporate & Commercial

Attleborough | Aylsham | Dereham | Diss | Norwich | Walton | Wymondham

Lexcel
ACCREDITED

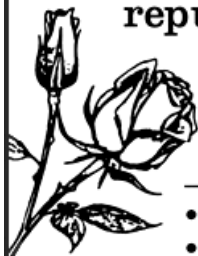
www.spiresolicitors.co.uk

WYATT
SOLICITORS



Rosedale FUNERAL HOME

Providing the very best care.
We have established our
reputation by providing
an exceptional
service at an
affordable cost.



- BEREAVEMENT SUPPORT GROUP
- ADVICE ON FUNERAL GRANTS

A family
business –
we believe it
makes a
difference



Yard House
High Street
Attleborough
NR17 2EH

24 HOUR TEL
**01953
452538**

C.A. Rush Ltd., t/a Mill House Garage

MILL HOUSE GARAGE

THE COMMON, NEW BUCKENHAM

Tel: 01953 860 572-Fax: 01953 860 090

E-Mail: clive.rush@btconnect.com

EVERYTHING FOR THE MOTORIST...

M.O.T Station inc. Diesel and Catalyst cars

Full Diagnostic Facilities

Up-to-date E.C.U - Engine Management Scanner

Servicing

Exhausts, Batteries, Welding, Bodywork. Fully Equipped Tyre Bay

Insurance and Accident Repairs

Breakdown Service

AIR CONDITIONING SPECIALISTS

All makes of tyres at very low prices

WE WILL COLLECT AND RE-DELIVER YOUR CAR

John Underwood Antiquarian Books

from 16th to 19th centuries

Newspapers from 17th century

Modern First Editions

Children's Books

from Pooh to Potter

All the above and much more!

Book Room and Bindery open most
days .. please check before
visiting.

BOOKS WANTED

TO PURCHASE

BOOKBINDING CLASSES

Plum Tree Farm, Uppate Street,

Carleton Rode Tel: 01953 860746

www.johnunderwoodbooks.com

SWEEPERS

Chimney and Flue Cleaning Services

FOR A PROFESSIONAL SWEEP



Call Marty on:

01953 888544
07826 595385

Email: marty.the.sweep@gmail.com

EVENING AND WEEKEND SERVICE AVAILABLE

Helping hands in New Buckenham

If you are self-isolating, there is a group of volunteers within the village who are willing to help in the following ways:

- ⇒ Picking up your shopping
- ⇒ Picking up urgent supplies (e.g. medication, etc.)
- ⇒ Posting your letters
- ⇒ Walking your dog
- ⇒ Contacting you by telephone to check that you are alright

If you need help, please ring Alice and Richard on 01953 860136 and we will pass your details on to a volunteer who will do their best to help. If you'd rather email it's

alicecattermole@hotmail.com or you can text us on 07900 272524. We will usually be available between 8am and 9pm and will check our messages frequently throughout the day.

Kings Stores can be contacted on 01953 860264 or by email at suecat64@outlook.com.

Free Tree Giveaway!

Following our symbolic planting of an oak tree on the village green last year, New Buckenham Climate Action Now has eight cell-grown native trees to give away on a first-come first-served basis.

We have two each of rowans, crab apples, hollies and silver birches. If you would like to help fight climate change by planting a tree in your garden please call Annie (861300) or Sue (860100).

There's nothing Common about New Buck!

In these strange days of deep fear and uncertainty, we are confronting a very real concern about both physical and psychological wellbeing. Experts increasingly tell us that engagement with the natural world can be the great de-stresser. There are those of us who have long known this! How fortunate, then, that New Buckenham is surrounded by quite exceptional countryside, providing a daily feast for the senses.

I have been visiting your beautiful village for over thirty years. A refugee annually from the challenges in Northern Ireland, at first I came with my wife, then with our daughters, one of whom chose to do Science at UEA. All of us feel a part of this Norfolk gem. In all this time, I have been privileged to see wildlife which is increasingly rare elsewhere.

Last week alone, as the coronavirus crisis mounted, gentle walks along Cuffer Lane resulted in opportunities to see, high in the sky, ten buzzards all circling at once; a group of roe deer crossing the fields in full view; skylarks filling the air with their remarkable music; yellow hammers lighting up the hedgerows; hares animating the furrows, and primroses brightening the banks and ditches. Everywhere there are signs of spring and the hope it brings. It is impossible not to feel re-invigorated.

But that's just a snapshot. There is so much more. I've walked Cuffer Lane – this small, historic stretch of the Tas Valley Way – in all seasons and at all times of the day and night. There are at least nine of the UK's 18 species of bat, all of them red listed and in need of protection. The fact that they are here suggests still healthy numbers of insects on which the bats feed.

On starry winter nights, I have listened to Tawny Owls. On misty autumn evenings, Barn Owls have ghosted close overhead and on one memorable Summer morning a Little Owl sat like a benign gargoyle on a low barn roof.

Continued on page 16...



The Orchard Montessori

Preschool & Nursery

OFSTED registered

NEWLY OPENED!

- Free spaces available for 2, 3 and 4 year olds
- Idyllic rural location
- Full Montessori Programme in line with the Early Years Foundation Stage (EYFS)
- Experienced and qualified staff and management team
- High staff/child ratios
- Exceptional indoor/outdoor play opportunities

**The Orchard Montessori Preschool & Nursery
The Fen, Banham NR16 2BU**

t: 01953 887863 m: 07443658586
e: theorchardmontessori@gmail.com
www.theorchardmontessori.co.uk



Pete Vale



**Professional
Painter, Decorator
and Airless Sprayer**

Accredited by the P.D.A
High quality, friendly service
Fully insured
Free quotations

T 01953 861 230

M 07986 114 108

E peter.vale@hotmail.co.uk



PValeDecorating



Andy Free

Dip FD



Independent family funeral director

'Quietly helping and guiding bereaved families for many years now, our family team offer guidance and direction at a time most needed'

Pre-paid Funeral Plans and Memorialisation Available

Attleborough 01953 452455

Wymondham 01953 605222

attleborough@andyfree.com

wymondham@andyfree.com

24 hour service

Kings Stores

We offer a wide range of services and supplies including groceries, fresh meat and veg, newspapers, lottery, dry cleaners and lots more ...

Opening Hours: Monday – Saturday 7 am to 7 pm
Sunday 8 am – 12.00 pm

Post Office: Wednesday 9.30 am – 12.00 pm

Why not call in and give us a try?

Look out for our special offers!

01953 860264

New Buckenham Parish Council

Chair: Karen Hobley
(01953 860529 / karenhobley@hotmail.com)

Vice-Chair: Andrew Bingham
(01953 861150 / andrew.bingham100@gmail.com)

Councillors: Don Crossman (01953 861246)

Mary Dowson (01953 860320)

Steve Highton (01953 860499)

Mary Manning (01953 861242)

Paul Martin (01953 861117)

Clerk: Trevor Wenman
(01379 641423 / parishclerk@newbuckenham.net)

The Parish Council meets at 7:30pm in the Village Hall on the second Tuesday of every month. Further information about the Parish Council can be found on our notice board on the Village Green or on our website www.newbuckenhampc.info.



As human beings scramble for the re-set button, the natural world carries on. Spring develops. More bird migrants will arrive: chiffchaffs, willow warblers and whitethroats with their scribbling song. I am eager to see whether there will be an upturn in the numbers of house martins, swallows and swifts whose

numbers were down last year. Don't you, in the village, look forward to the shrill shrieking of a squadron of swifts screaming down King Street?

The populations of some farmland birds have crashed alarmingly. To all intents and purposes, we have lost corncrakes and corn buntings, the grey or English Partridge is in trouble and then there is the case of the Turtle dove which flies 6000 miles from west Africa to breed here. When I first came to New Buckenham in the late 1980s, I heard and saw them daily. Since then, their numbers have dropped by 95%. For a while there were none here at all, but in recent summers they've returned here. About now they'll be setting out from sub-Saharan Africa, flying up to 700km a day to arrive here in late April/May. Now that is a hopeful thought. The RSPB even tracks some of them on their extraordinary journey, mostly to the East of England. I am already filled with hope and excitement for the first reports of their purring call on the Common or on Cuffer Lane.

Oh, and please let's have a good summer! In good summers, New Buckenham will be surrounded by clouds of our most beautiful butterflies: Brimstones, Peacocks, Red Admirals, Small Tortoiseshells, Commas, Painted Ladies, Gatekeepers, and so on.

Then there are the toads, frogs, newts – you even have the

Great Crested newt, which is so rare. And what about snakes? Once it was called the 'common' grass snake. There's nothing much that's 'common' about this green, yellow and black slithering body now. I've kept a diary and the lists of species I've seen here goes on and on... you have a wildlife-lovers haven.

I am a city dweller with a passion for the countryside. It's to the country that I go to soothe a troubled mind, to find peace and beauty and endless delight and stimulation. What a pleasure it has been to share in New Buckenham's natural abundance — increasingly rare and vulnerable and precious as it is.

Long may it survive and thrive and bring its life-enhancing benefits to its lucky custodians and guardians!

Thank you to the *Parish News* for affording me the opportunity to reflect on a small corner of England that has become a much loved second home to me. Oh, and did I mention the hares...?

Terry Jones

Tfwjones@yahoo.co.uk / 10 Dundela Gardens, Belfast, BT4 3DH



Tacolneston Osteopaths

Yvonne Ayliffe D.O.FSCCO BSSCMD MICrA
Chloe Savage M.Ost DPO Chanté Batson M.Ost
9 The Fields, Tacolneston

Tel: 01953 789629

07770652839

reception@norfolkost.co.uk

- Experienced osteopath qualified for 38 years
- Gentle Osteopathy for the elderly
- Cranial Osteopathy
- Headaches and migraine, acute necks
- Sporting injuries, accidents & whiplash
- For muscular and joint problems
- Repetitive strain injuries at work or at home
- Pre- & post- pregnancy for mother and baby

OSTEOPATHY FOR ALL

Also at Aylsham 01263 732028



Breckland Brush Chimney Sweep & Stove Installation



NATIONAL ASSOC. OF CHIMNEY SWEEPS

Qualified Experienced Professional

sweep@brecklandbrush.co.uk

01953 881579 / 07966 298777

R.BUNN ELECTRICAL

Richard Bunn

LED Lighting - Indoor/Outdoor Lighting

Extensions - Rewires - New Builds

Additional Lights & Sockets

Mains Upgrades

07899936057

Competitive Hourly Rates

R.BunnElectrical@Gmail.com

No V.A.T

Part P Approved

Biz Buzz March 2020



Biz Buzz is a support group for all businesses of any size, full time or part time, in and around New Buckenham. It's particularly useful for those who work from home, the self-employed and small businesses, whether on the high street or online. Retired folk are also welcome, as they have expertise we can learn from.

Our aim is to share knowledge, build contacts, improve the business environment, find funding, come up with new ideas and help each other in whatever way we can. A monthly Biz Buzz newsletter keeps everyone up to date with happenings and issues that affect businesses.

This month at www.np4nb.online – Crisis Advice and Answers

- ⇒ Biz Buzz has the latest facts (19th March) about the business help you can access and how to get it.
- ⇒ All the contacts you need both locally and nationally. Names, phone numbers for direct queries and websites.
- ⇒ How are our local businesses coping?
- ⇒ Are you doing what your company needs? Your crisis management communications check list.
- ⇒ And, of course, the extraordinary twists and turns of the Mobile Phone Mast Mystery!

If you have any biz notes please send to: info@np4nb.online.

Janet Trewin

Darren Rush

BUILDER & DECORATOR

All types of building work undertaken including:-

- Specialising in Older Properties
- Extensions / Loft Conversions
- Roofing
- Property Maintenance
- Landscape Gardening

MOBILE: 07778 602 026

HOME: 01953 860 693



Slimming World with Amy

Feel your best in 2019 where a world of support and friendship awaits!

Monday – New Buckenham Village Hall
5.30 & 7.30pm

Thursday – Attleborough Scout Hut
(near the train station)
9.30am

Pop along or contact Amy
07590 806046



SMART GARDENS

Lawns and Borders Maintained

Spring and Autumn Pruning

Hedges Trimmed

For free quote ring Vicky or Alan

01953 860451 / vickyal0712@gmail.com

Kissing Gates & Parish News: 40 Years Ago

This photograph was taken exactly 40 years ago on a sunny late winter afternoon, 1980. The young family is going through a kissing gate on the footpath north of the castle moat and you can see the other gate towards the church. They were simple and effective, and necessary because Mr Eric Gladden grazed his cattle on the fields. Under the metal gate is some snow which took a long time to melt in the castle's winter shadow. The metal gate itself is secured to the post by orange baler twine, a method sometime referred to as a 'Norfolk hinge'.

The *Parish News* was then usually two or three pages of typewritten text, duplicated and stapled in one corner. The April 1980 edition had a black-and-white drawing of birds done by Richard Millington, the birder and artist, who then lived in the village. There was a lengthy article by Suzanne Booty about her exploration of St Martin's gravestones, with evidence of a 'scratch dial' on a wall. Of particular note was the abundance of mosses and lichens on the stones.

The Methodist Chapel announced eight services and a concert by the Diss Salvation Army for that month. The church flowers rota for Easter listed where the arrangements were to be and the 20 ladies that were to do them. Elsewhere newcomers and departures were noted, as were three deaths and the state of health of four named invalids, given as 'in hospital', 'indisposed' and 'improved'.

Parish News carried no advertising, but invited donations. In the previous year there had been a surplus of £2.26. Perhaps because of this, the Magazine Committee broached the idea of starting paid-for advertising.

After an article on 'Superstitions' by Mrs Joan Whitwham, there were numerous club reports. This particular April there were short articles about Wayland Lions Club, Royal British Legion (Women's Section), the Church annual meeting, the

annual dinner of the South Norfolk Branch of the Diocesan Association of Ringers at the (old) village hall, Angling Club, Good Companions, Miscellany, and the Women's Institute where there was a film on thatching and the raffle prize of a chicken was won by Mrs Hazel Bates.

New Buckenham Archive



Contributions for the May 2020 issue of *New Buckenham Parish News* should be submitted by 6:00pm on Sunday 19th April 2020 to Linda Bryan, Pine Cottage, Marsh Lane (861107), Michael Boswell, Peel House, Chapel Street (860015), Richard Hoggett, 9 Church Street (860136) or by email to editor@newbucknews.co.uk.

TO ADVERTISE: please contact Mary Dowson on 01953 860320 or mdowson@btinternet.com