

New Buckenham Parish News



June 2021

TEL - 01953 860008

EMAIL - STACEY@ANGELCAKESTEARM.CO.UK

ANGEL CAKES TEAROOM NEW BUCKENHAM NR16 2AF

FACEBOOK:

WWW.FACEBOOK.COM/ANGELCAKESBYSTACEY/



We are a family run Tearooms/Cafe specializing in great homemade cooked food, refreshments, home comforts, customer service & most importantly CAKE!!!

Pop in for a cup of coffee & cake or a spot of lunch in a relaxed environment. Stay as long as you like & chat with friends and consider us your home away from home.

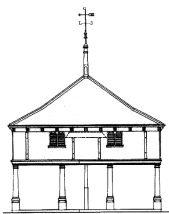
Table service is provided so no need to wait around, just take a seat, you may lounge on the ground floor by the fireplace or sit upstairs by the large windows overlooking the beautiful village of New Buckenham.

SERVICES

- Bespoke Celebration Cakes (Birthdays, Weddings, Christenings etc)
- Afternoon Tea (Booking only)
- Private functions (Birthdays, Christenings, Funerals, Meetings etc) (Capacity 25 upstairs, 12 downstairs)
- Outside Catering (Functions, Corporate, Afternoon Tea etc)
- Wedding Afternoon Tea Catering (All China Supplied)
- Cake Decorating Classes.

For all inquires please speak to a member of our staff in store or by telephone or you can drop us a message through our Facebook page.





New Buckenham Parish News

June 2021

August Bank Holiday Fete

I am sure it will not come as a big surprise, but I am afraid that there will be no fete this year. The committee feel everything remains too uncertain to attempt to run a large event with lots of people needed to make it a success.

Carolyn Hupton

New Buckenham Fundraisers Committee

Parish News News

Every month, *Parish News* is distributed free to every house in the village, and we are very grateful to the Parish Council and all those villagers who have helped to cover our production costs during the past year. We are also grateful to those businesses who choose to advertise with us, especially during these difficult times.

If you would be interested in sponsoring an issue of *Parish News* in 2021 or advertising in the magazine, please contact Mary Dowson on 01953 860320 or mdowson@btinternet.com.

Parish News Committee

Cover Photo: Turtle Dove (Charles Oxley)

The Village Hall is OPEN!

Following confirmation that COVID restrictions were eased on 17th May, we can clarify that the Village Hall is now open for bookings, subject to the restrictions that are still in force.



We are taking bookings for children's parties, christenings, weddings and other events, following government guidance and restrictions.

There are still some building works to be completed, but we will do our best to ensure safe access to the Hall.

To make a Village Hall enquiry or booking please email bookings@newbuckenhamvillagehall.co.uk or call 07469 715517.

Stevie Hobley on behalf of New Buckenham Village Hall Trust

Food Bank

Donations to the food bank have been a little down recently, but demand is still high. Lockdown has put many people into debt and with half term and summer holidays coming up, families will be struggling. Please keep donating – your contributions make a real difference!

There are collection points at Kings Stores and in St Martin's church, and all dry and tinned goods, plus toiletries and sanitary products are welcome. Thank you.

Susan Jowett (860929)

Kings Stores

We offer a wide range of services and supplies including groceries, fresh meat and veg, newspapers, lottery, dry cleaners and lots more ...

**Opening Hours: Monday – Saturday 7 am to 6 pm
Sunday 9 am – 12.00 pm**

Post Office: Wednesday 10.30 am – 12.00 pm

Why not call in and give us a try?

Look out for our special offers!

01953 860264

***Breckland Brush
Chimney Sweep
& Stove Installation***



NATIONAL ASSOC. OF CHIMNEY SWEEPS

Qualified Experienced Professional

sweep@brecklandbrush.co.uk

01953 881579 / 07966 298777

Mrs Samantha McCluskey

BSc(hons) Pod Med, PGDip, MCPod, HCPC

Podiatrist/ Chiroprapist

14 years' experience in the NHS

**Professional assessment and
treatment in your own home**

Tel: 07905 724408



The COLLEGE
of PODIATRY



New Buckenham Parish Council

Our June meeting will take place on Tuesday 8th June at 7:30pm at the Village Hall. A warm invitation is extended to all parishioners.

We are delighted to be back at the Hall after an absence of over 12 months. Social distancing will be in place and masks will need to be worn. In order to assist us with the organisation of the meeting, please would you be kind enough to let me know if you wish to attend, using the contact details below or the link on the website. Thank you for helping us with this

A reminder that the agenda relevant to each meeting will be posted on the noticeboard on the Village Green and on the website (www.newbuckenhampc.info) where you will also find further information about the Parish Council. Parish Council meetings take place on the second Tuesday of every month except August.

Karen Hobley Chair (860529 / karenhobley@hotmail.com)

Brief Notes of the Meeting 11th May

Resolved that Cllr Karen Hobley be elected as Chairman of the council 2021/2 and that Cllr Andrew Bingham be elected as Vice-Chairman 2021/2.

Financial report for the month ending April 30th was noted.

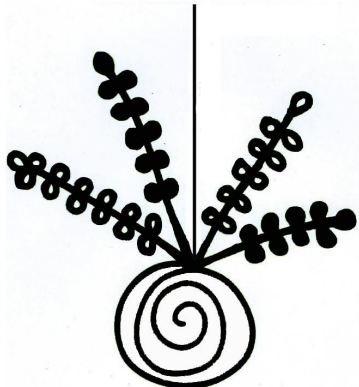
Payments for May were approved.

All Matters Arising were dealt with in the Annual Parish Meeting following at 8:00 pm.

Mary Dowson on behalf of the Parish Council

KOKEDAMA

THE JOY OF PLANTS



YOUR LOCAL SHOP FOR
PLANTS, GIFTS AND HOME
DECORATION IN THE HEART
OF NEW BUCKENHAM

SPECIALISING IN UNIQUE PLANT
CREATIONS IN RECYCLED
CONTAINERS AS WELL AS
A FANTASTIC SELECTION OF
HOUSE PLANTS & GIFTS WITH
A DIFFERENCE.

3carynlouis@gmail.com

CALL CARYN OR TONY ON

01953 860 512 OR

07940377998

OPEN TUESDAY- SATURDAY 11-5PM

BAKEHOUSE COTTAGE, KING ST, NEW BUCKENHAM, NR16 2AF



Just Ask Home Improvements

Kitchens, Bathrooms, Plastering, Tiling & Small Extensions

For All Your Property Requirements

Free No Obligation Quotes

01953 861476 or 07584 283624

email: justaskpaul1@yahoo.co.uk

f @justaskpaul

Just Ask Paul



St Mary's Residential Care Home

Market Place, New Buckenham, Norfolk, NR16 2AN

tel: 01953 860 956 email: manager@stmaryshome.co.uk

A home from home, at St Mary's, we offer 24-hour person-centered care within safe, warm and friendly surroundings with an emphasis on providing a high quality of life.

- Care services offered include day care, respite, dementia, palliative, end of life and long/short-term residential care
- Day care services include hot meals & refreshments
- Freshly prepared meals, including catering for special diets - Consistently received highest Food Hygiene rating of 5 star
- Single occupancy rooms, passenger lift, two enclosed gardens, Wi-Fi, nurse call facilities, wheelchair friendly wet room and a hair salon
- Residents enjoy engaging and stimulating activities
- Top ratings by residents, family & friends and healthcare professionals
- Social Services and self-funding residents welcome
- Self-funding residents offered very competitive rates
- Care package tailor-made to meet your requirements
- No-obligation free trial day offered

**For further information or for a fact-finding visit, please contact
the manager on 01953 860 956 or email
manager@stmaryshome.co.uk**

Registered and licensed to provide services by the Care Quality Commission (CQC)

- Under new management -

Book Stall

Thank you to all those who have kindly helped to shift our cleared-out books, and especially to Tony Lister who took several loads for recycling. It has been such a help and is much appreciated. We are delighted to say we now have room for new stock! Your generosity has been overwhelming and has brought in much needed cash for the church and provided a real resource for the village. Some villages make book stalls in telephone boxes – we could fill a whole exchange! Could we just politely ask the following:

- ⇒ A few carrier bags at a time are more manageable than huge Pickfords boxes.
- ⇒ We are not as young as we were!
- ⇒ Preferably fiction only.
- ⇒ We can take good quality cookery, garden and history books, but cannot sell Rough Guides to Thailand 1993, *Betamax for Dummies* or your granny's prayer book!
- ⇒ No more DVDs, thank you!

Thank you for all your support, and please keep bringing and buying!

Susan Jowett (860929) and Jane Ling (860679)

New village arrivals!

Once again, Turtle Doves have flown 5,000 km from West Africa. Flying mostly at night, reaching speeds of 60 km/h they can cover up to 700 km without stopping. But this bird is now threatened with global extinction. It's the fastest declining bird species on the planet and is IUCN red listed. Their distinctive 'purring' call (nothing like the Collared Dove's 'coo-coo') has been monitored on the Common and from 12th April there were daily sightings also at Hunt's Farm where they have been turning up for years in the Spring.

Some 40 years ago, flocks of 20–30 turtle doves were expected. That would be unheard of now. Since 1995, its numbers in the UK have been slashed by 95%. Operation Turtle Dove studies show there are half as many chicks today as there were in the 70s. Whilst the decline is exacerbated by the shooters of Southern Europe, the truth is that the numbers of shooters has not increased. The RSPB believe the main reason for the decline is the loss of habitat and food resources here in the UK, since it is to the UK they come to breed. The disappearance of scrub vegetation and hedges for nesting sites is critical. They feed on weed seeds on the ground, especially where the vegetation is short and sparse. Their favourite seeds are fumitory, knotgrass and chickweed.

The RSPB is conducting an innovative project alongside DEFRA to help landowners establish land management systems to protect these birds. East Anglia is the trial area. The RSPB hopes to launch a national Turtle Dove survey in May to September, if Covid allows. New Buckenham will be taking part. To find out more or record a sighting, the Turtle Dove survey webhub is at <https://national-turtle-dove-survey-rspb.hub.arcgis.com/>. There's also more information and videos on <https://www.operationturtledove.org/turtle-doves/ecology-habitat-and-food/>.

Janet Trewin

Turner Funerals

SERVING TOWN & COUNTRY

01842 761333 (24 hr)



a fresh approach

Andy Free

Dip FD



Independent family funeral director

'Quietly helping and guiding bereaved families for many years now, our family team offer guidance and direction at a time most needed'

Pre-paid Funeral Plans and Memorialisation Available

Attleborough 01953 452455

Wymondham 01953 605222

attleborough@andyfree.com

wymondham@andyfree.com

24 hour service

Events at

New Buckenham Common



Annual Orchid Count

SATURDAY 22 MAY, 2PM

Assist with our vital monitoring work by helping to count the beautiful green-winged orchids.

Conservation & Wildlife Walk

WEDNESDAY 23 JUNE, 10AM-12NOON

Join Senior Reserves Assistant Izzy for a guided walk around the common. Find out how NWT manage the common and the basic conservation principals that influence our decisions.

Walking through Common History

TUESDAY 6 JULY, 6.30-8.30PM

Join Tom Williamson, Professor of Landscape History at UEA, for a guided walk around

Ragwort Pulling Work Party

FRIDAY 16 JULY, 10AM-3PM

Help NWT staff and regular volunteers to keep on top of this controlled plant by reducing its numbers. Please bring a packed lunch, drink and sun hat.

Bat Walk

THURSDAY 19 AUGUST, 7.30PM

Join Senior Reserves Assistant Izzy and Lindsey Bilston of Norwich Bat Group to discover more about bats. Learn how to use a bat detector to hear bats as they use sound to hunt for food. All ages welcome.

All activities are free, but booking is essential. To book phone 01603 625540 or

the common. Learn about the history of commons in general and how the common at New Buckenham was used in the past.

Bee Walk

THURSDAY 8 JULY, 11AM-12.30PM

Join NWT's Rebecca Evans for an introduction to bees. Discover which bee species can be found on the common and learn more about them.

email:info@norfolkwildlifetrust.org.uk
All events start from the small car park near the common play area.



Images: Richard Osbourne, Charles Oxley

Saving Norfolk's Wildlife for the Future

Darren Rush

BUILDER & DECORATOR

All types of building work undertaken including:-

- Specialising in Older Properties
- Extensions / Loft Conversions
- Roofing
- Property Maintenance
- Landscape Gardening

MOBILE: 07778 602 026

HOME: 01953 860 693

SMART GARDENS

**Lawns & Borders
Maintained**

Spring & Autumn Pruning

Hedges Trimmed

**For a free quote ring
Vicky or Alan**

01953 860451

vickyal0712@gmail.com

HEALTHY FOOT CARE

Routine Foot and Nail Treatment in the Comfort of your own Home



Foot Health Practitioner
Dip FH MCFHP MAFHP
Please Call Lou
07500 516276

Fungal Nail Infections
Corns and Callus Removal
Ingrown Toenail Treatment
Footcare for Diabetic Patients
Reduction of Thickened Nails
Treatment for Cracked Heels
Verruca Treatment
Nail Trimming

Fully insured

Tacolneston Osteopaths

Yvonne Ayliffe D.O.FSCCO BSSCMD MICrA

Chanté Batson M.Ost

9 The Fields, Tacolneston

Tel: 01953 789629

07770652839

reception@norfolkost.co.uk

- Experienced osteopath qualified for 39 years
 - Gentle Osteopathy for the elderly
 - Cranial Osteopathy
 - Headaches and migraine, acute necks
 - Sporting injuries, accidents & whiplash
 - For muscular and joint problems
 - Repetitive strain injuries at work or at home
 - Pre- & post- pregnancy for mother and baby
- OSTEOPATHY FOR ALL**
Also at Aylsham 01263 732028



Everything for the motorist?



MILL HOUSE GARAGE

- ✓ M.O.T Station
- ✓ Autologic Diagnostics
- ✓ Computerised Four-wheel alignment
- ✓ Servicing

- ✓ Exhausts, Batteries, Welding, Bodywork
- ✓ Fully Equipped Tyre Bay, Insurance & Accident Repairs
- ✓ Breakdown Service

AIR
CONDITIONING
SPECIALISTS

ALL MAKES OF
TYRES SUPPLIED AT
COMPETITIVE PRICES

WE WILL
COLLECT AND
DELIVER YOUR CAR

LOAN CAR
AVAILABLE

SUPPLIERS
OF
FLOGAS

Norwich Road, New Buckenham, NR16 2BH
Phone: 01953 860572, 01953 860947

office@millhousegarage.co.uk
www.millhousegarage.co.uk

JOHN UNDERWOOD



ANTIQUARIAN BOOKS

Books and Manuscripts bought and sold

From C16th to C20th

Tel: 01953 860 746

Website: www.johnunderwoodbooks.co.uk

Email: underwoodbooks@icloud.com

Follow: underwoodbooks on Instagram

SWEEPERS

Chimney and Flue Cleaning Services

FOR A PROFESSIONAL SWEEP



Call Marty on:

01953 888544
07826 595385

Email: marty.the.sweep@gmail.com

EVENING AND WEEKEND SERVICE AVAILABLE

Great Crested Newts & New Zealand Pygmyweed

Endangered Great Crested Newts are here! An NWT study proves it. That's the good news... BUT there's another distinctly UNwanted visitor, too!

Great Crested Newts are the biggest newt species in the UK (up to 17cms) and have been around for approximately 40 million years, but for how much longer? Due to massive declines in numbers they are increasingly rare. It's illegal to kill, injure, capture or disturb them; damage or destroy their habitat; or to possess, sell or trade them at any of their life stages including eggs. Great crested newts are dark brown or black with a distinct 'warty' skin. The underside is bright orange with irregular black blotches. Norfolk Wildlife Trust is developing a database of all the sightings in Norfolk. Their survey on the SSSI in New Buckenham found GCNs in the pond on the cricket pitch and on Spittle Mere.

However, in both places they also found *Crassula Helmsii* (New Zealand Pygmyweed/swamp stonecrop). It's a small-leaved, but incredibly invasive species which is a threat to wildlife, robbing the water of light, oxygen and goodness. It can grow in water up to 3 metres deep and also on the margins some distance away. How did it get there? Birds, boots, dogs and more! The most urgent thing is to wash pond water off immediately. *Crassula* can grow from the tiniest bit of root and it could spread to your own garden pond.

Find out more here: <https://www.arc-trust.org/great-crested-newt>. If you see a Great Crested Newt email: wild@norfolkwildlifetrust.org.uk giving the location ideally including a postcode or grid reference and the date.

Janet Trewin



Outstanding advice
and legal expertise for
the region

How can we help?

- Agriculture
- Conveyancing
- Employment
- Family
- Wills, Tax & Probate
- Tenancy Management
- Litigation & Disputes
- Corporate & Commercial

Attleborough | Aylsham | Dereham | Diss | Norwich | Walton | Wymondham

Lexcel
ACCREDITED

www.spiresolicitors.co.uk



Rosedale FUNERAL HOME

Providing the very best care.
We have established our
reputation by providing
an exceptional
service at an
affordable cost.



- BEREAVEMENT SUPPORT GROUP
- ADVICE ON FUNERAL GRANTS

A family
business –
we believe it
makes a
difference



Yard House
High Street
Attleborough
NR17 2EH

24 HOUR TEL
**01953
452538**

Biz Buzz: Support Local Businesses!



We are approaching normality, with some differences. After months of restrictions, doors are open again – inevitably with new rules: sanitiser, table service, arrows, card payments, etc. Now you can spend!

CUSTOMERS: Allow more time for your visits. Don't expect to dash in and out as we used to. **ASK** about new rules.

BUSINESSES: To control the excitement and reduce stress, ensure you explain your system clearly. **YOU** may have been planning it for weeks, but **WE**, your customers, may have no idea how it will work. So smile and explain, by word of mouth or with clear posters.

ANGEL CAKES will be flying high with a new look! Cake-decorating supremo Stacey swapped cake decoration for decorating the tea room on King Street, ready for the **BIG DAY** It all happened on 18th May. By noon the place was mobbed! No waiting on the pavement. Just walk on in, sanitise your hands and sign the track and trace register. Sit where you like, with loads more room upstairs. The Keep Fit class from the Village Hall were upstairs by 10:45... I do hope they weren't choosing cake! Normal opening times are Tuesday to Saturday from 10am until 4pm. The kitchen closes at 3pm, so please order in good time!

There has been a right royal make-over at the **KING'S HEAD**! Danny and Jen have been redecorating too – outside seating with canopies, inside a mini make-over ready for noon on the 18th May. Waitress Bella was ready, as Dan rushed outside to check umbrellas, because at noon thunder and rain crashed in but also brought hopeful rainbows!

Continued on p.20...

**When you need some help
around the house....**



...call the Cavalry

- **Domestic cleaning**
- **Ironing / laundry – collection and delivery service**
- **Dog walking / feeding – daily home pet service whilst you are on holiday or at work**
- **Errands – any form of shopping, collection or delivery**

**Whatever your task,
we will endeavour to tackle it
to your satisfaction**

There are occasions when everyone could do with a little help around the house – in times of illness, disability or simply from pressure of a busy lifestyle.

Whether you need assistance on a regular basis or just occasional help, Household Cavalry is here to provide a dependable, diligent and trustworthy service.

Our carefully selected, fully vetted and insured team can tackle a whole range of household tasks.

Our fee structure is flexible to accommodate your needs, so if you would like more information about our services or a quotation, **please contact Sally on:**

01953 488635

07900 894902

Household Cavalry Limited

**Slate Plantation Barn, Home Farm Lane,
Merton, Thetford, Norfolk IP25 6QS
sgt.major@householdcavalryltd.co.uk**

**Buckenham House
Holistic & Beauty Therapies**

Facials
Reflexology
Indian Head
Massage ~ Swedish, Hot Stone, Lava Shell
Pregnancy Massage
Hopi Ear Candling
Manicure & Pedicure
Eyelash & Brow Tinting
Waxing

Using Eve Taylor, OPI, OPI Pro Spa, OPI Gelcolour, Orly,
Orly GelFX, Songbird and GiGi Wax Products

Beauty & Holistic Therapist NVQ3 and fully insured.
Member of the Association of Reflexologists

To book an appointment or for enquiries

Contact Jane on
01953 860013

OR

Find me on

facebook

New Buckenham Rd, Old Buckenham, NR17 1PW

**WOMACK
BUILDING SUPPLIES LTD**



01953 788077

07770 388314

07796 638877

info@womackbuildingsupplies.co.uk

Architectural Salvage

The pub will be open from Tuesday to Saturday from 12 noon until 11pm and Sundays from 12 noon until 6pm. Mondays will be recuperation day, so the pub will be closed. Food is served lunchtimes and evenings, Sundays are lunch only. Friday night: burger menu, as now, eat in or take away. Covid measures: Track and trace on entry; Rule of 6 per table; two households only for more than 6; face masks on entry until seated at your table; sanitisers and a one-way system. PLEASE BOOK for meals: 01953 861247.

At KINGS STORES (“We NEVER closed!”) Sue has pretty much everything, including those lottery tickets. Opening times are Monday to Saturday from 7am until 6pm, and Sundays from 9am until noon. The Post Office is available on Wednesdays from 10:30am until noon.

If you know anyone who might find this group useful, do pass the information on to them. All Biz Buzz updates are to be found on www.np4nb.online.

Janet Trewin



CATJOY Pet Services

We are a successful family-run business providing high quality, bespoke care for your cat(s) IN YOUR OWN HOME whenever you can't be there.

Benefits we offer include:

- ☆ Security and stress free care in familiar surroundings
- ☆ Minimal disruption to normal routines
- ☆ Individual care and attention
- ☆ Value for money
- ☆ Peace of mind with a daily text or email

We look after other family pets too.

We are experienced cat owners, qualified in cat care, reliable and **DBS checked**.

See customer feedback on our website

www.catjoy.co.uk

For more details, contact Jane

01953 888568 or 07875 266059

Catjoypetservices@gmail.com



BEAUTY BOX

AND FOOT HEALTH PRACTICE

Dermalogica facials / Body treatments

Aromatherapy and Swedish massage

Indian Head massage

Manicures / Pedicures

Nail extensions

Waxing Electrolysis

General foot care / nail cutting

Corns / Hard Skin

Ingrowing toe nails

Verruca treatment / Diabetic Feet

HOME VISITS AVAILABLE

Gayle Wilby Dip CFHP / MPSPract

A MEMBER OF THE ALLIANCE OF PRIVATE SECTOR
PRACTITIONERS

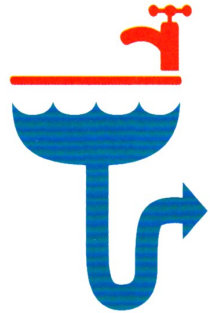
1 Norwich Road, New Buckenham

Tel: 01953 861 021

R.G. Plumbing and Heating

**Free
estimates**

**Fully
qualified
and insured**



07920 032363

RGaultPlumbing@gmail.com

HAND-MADE WINDOWS
DOORS, KITCHENS
AND FURNITURE

JB CARPENTRY



EVERYONE IS TALKING ABOUT
JAMIE'S HAND MADE WOODWORK
TELEPHONE JAMIE ON
01953 860 933

Broadland TREE SERVICES

- Tree Surgery
- Consultancy
- Landscaping
- Stump Grinding
- Wood chippings for sale
- Access Hire

J K Anderson
NDF F. ARBOR. A

P J Anderson
ND. ARB

The Limes, Rothbury Rd, Wymondham

t: 01953 607715

Sycamore House, Tanning Lane, New Buckenham

t: 01953 860370

www.broadlandtreeservices.co.uk

St Martin's Church Services – June 2021

Sun 6th	11:00am	Holy Communion	Trinity 1
Sun 13th	6:30pm	Evensong	Trinity 2
Sun 20th	11:00am	Morning Prayer	Trinity 3
Sun 27th	11:00am	Morning Worship	Trinity 4



Financial Advisers for Norwich, Norfolk, and Suffolk

We offer advice in many areas including:

Specialists in Pension Planning

Unit Trusts

ISAs

Investment Bonds

IHT Planning

Protection

Our family friendly approach is of utmost important to us, and we are always here for our clients and prospective clients. We offer a **free initial, no obligation** consultation.

Want to know more? Why not visit our website at www.anglianwealthmanagement.co.uk or contact the office today on 01603 752500 or Email us at anglianwm@sjpp.co.uk

Anglian Wealth Management, 124 Thorpe Road, Norwich, NR1 1RT

Anglian Wealth Management is an Appointed Representative of and represents only St. James's Place Wealth Management plc (which is authorised and regulated by the Financial Conduct Authority). The titles 'Partner' and 'Partner Practice' are marketing terms used to describe a St. James's Place representative

LINDA'S CLEANING SERVICES

Honest, reliable lady
Over 10 years
experience

Seeks Domestic House
Cleaning Work

Call now for a quote
01379 677766,
07733033253



Thinking of selling or letting
your property?

Contact us we're happy to help...



propertysearch@millbanks.com

01953 453838



The Orchard
Montessori
Preschool & Nursery

OFSTED registered

NEWLY OPENED!

- Free spaces available for 2, 3 and 4 year olds
- Idyllic rural location
- Full Montessori Programme in line with the Early Years Foundation Stage (EYFS)
- Experienced and qualified staff and management team
- High staff/child ratios
- Exceptional indoor/outdoor play opportunities

**The Orchard Montessori Preschool & Nursery
The Fen, Banham NR16 2BU**

t: 01953 887863 m: 07443658586
e: theorchardmontessori@gmail.com
www.theorchardmontessori.co.uk



Pete Vale

Professional
Painter, Decorator
and Airless Sprayer

Accredited by the P.D.A
High quality, friendly service
Fully insured
Free quotations

T 01953 861 230

M 07986 114 108

E peter.vale@hotmail.co.uk



PValeDecorating



New Buckenham Parish Council

Chair:	Karen Hobley (01953 860529 / karenhobley@hotmail.com)
Vice-Chair:	Andrew Bingham (01953 861150 / andrew.bingham100@gmail.com)
Councillors:	Don Crossman (01953 861246) Mary Dowson (01953 860320) Steve Highton (01953 860499) Mary Manning (01953 861242)
Clerk:	Trevor Wenman (01379 641423 / parishclerk@newbuckenham.net)

The Parish Council meets at 7:30pm on the second Tuesday of every month. At present, the meetings are being held online via Zoom. Further information about how to join these meetings, and the Parish Council more generally, can be found on our notice board on the Village Green or on our website www.newbuckenhampc.info.

Contributions for the July 2021 issue of *New Buckenham Parish News* should be submitted by 6:00pm on Saturday 19th June 2021 to Linda Bryan, Pine Cottage, Marsh Lane (861107), Michael Boswell, Peel House, Chapel Street (860015), Richard Hoggett, 9 Church Street (860136) or by email to editor@newbucknews.co.uk.